

# Knižnica programu FluidSIM - PNEUMATIKA - 09 Pressure Control Valves :)

## Pneumatic

[Supply Elements 01/15](#)

[Actuators 02/11](#)

[Frequently used cylinders 03/9](#)

Valves

[Configurable directional valves 04/6](#)

Frequently Used Way Valves

[Mechanically Operated 05/9](#)

[Pneumatically Operated 06/6](#)

[Solenoid Operated 07/8](#)

[Shutoff Valves and Flow Control Valves 08/17](#)

**Pressure Control Valves 09/9**

[Proportion valves 10/2](#)

[Valve Groups 11/8](#)

[Measuring Instruments and Sensors 12/10](#)

Electrical Controls

[Actuators 13/2](#)

[Power Supply 14/4](#)

[Measuring Instruments and Sensors 15/9](#)

[Relays 16/7](#)

Switches

[Manually Operated 17/6](#)

[General Switches 18/3](#)

[Proximity switches 19/4](#)

[Controller 20/3](#)

[Ladder Symbols 21/12](#)

[Digital Technique 22/28](#)

[EasyPort/CPD/DDE 23/4](#)

[GRAFNET 24/6](#)

[Miscellaneous 25/10](#)

## Pressure Control Valves

Pressure reducing valve

Variable pressure reducing valve

Pressure reducing valve

Variable pressure reducing valve

Pressure control valve with manometer

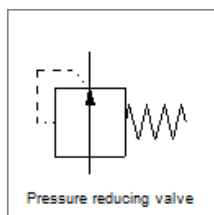
Closing pressure compensator

Variable closing pressure compensator

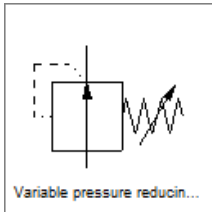
Opening pressure compensator

Variable opening pressure compensator

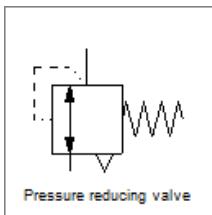
## Pressure Control Valves



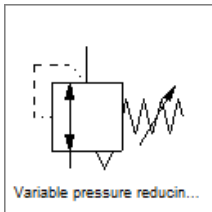
Pressure reducing valve



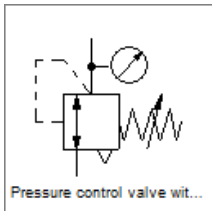
Variable pressure reducing valve



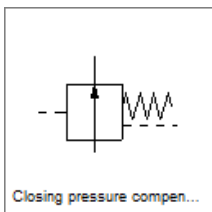
Pressure reducing valve



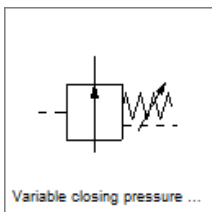
Variable pressure reducing valve



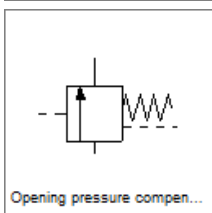
Pressure control valve with manometer



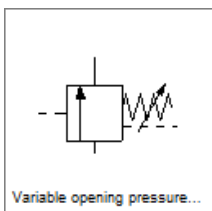
Closing pressure compensator



Variable closing pressure compensator



Opening pressure compensator



Variable opening pressure compensator