

Knižnica programu FluidSIM - PNEUMATIKA - 08 Shutoff Valves and Flow Control Valves :)

Pneumatic

[Supply Elements 01/15](#)

[Actuators 02/11](#)

[Frequently used cylinders 03/9](#)

Valves

[Configurable directional valves 04/6](#)

Frequently Used Way Valves

[Mechanically Operated 05/9](#)

[Pneumatically Operated 06/6](#)

[Solenoid Operated 07/8](#)

[Shutoff Valves and Flow Control Valves 08/17](#)

[Pressure Control Valves 09/9](#)

[Proportion valves 10/2](#)

[Valve Groups 11/8](#)

[Measuring Instruments and Sensors 12/10](#)

Electrical Controls

[Actuators 13/2](#)

[Power Supply 14/4](#)

[Measuring Instruments and Sensors 15/9](#)

[Relays 16/7](#)

Switches

[Manually Operated 17/6](#)

[General Switches 18/3](#)

[Proximity switches 19/4](#)

[Controller 20/3](#)

[Ladder Symbols 21/12](#)

[Digital Technique 22/28](#)

[EasyPort/CPD/DDE 23/4](#)

[GRAFSET 24/6](#)

[Miscellaneous 25/10](#)

Shutoff Valves and Flow Control Valves

Pneumatic timer, normally closed

Pneumatic timer, normally open

Nozzle

Throttle valve

Orifice

Variable orifice

One-way flow control valve

Shuttle valve

Two pressure valve

Quick exhaust valve

Check valve

Spring loaded check valve

Check valve with pilot control

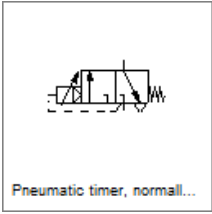
Spring loaded pilot-operated check valve

Pilot to close check valve

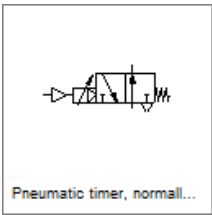
Pilot to close spring loaded spring loaded valve

Pneumatic counter

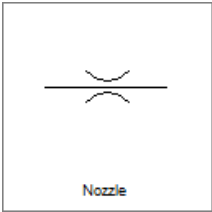
Shutoff Valves and Flow Control Valves



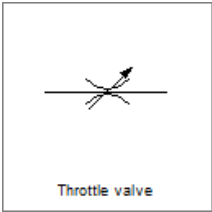
Pneumatic timer, normally closed



Pneumatic timer, normally open



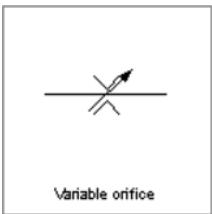
Nozzle



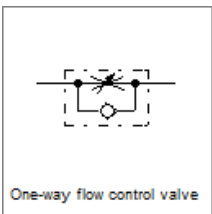
Throttle valve



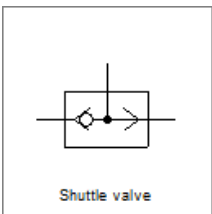
Orifice



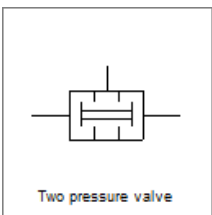
Variable orifice



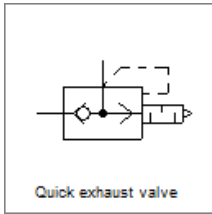
One-way flow control valve



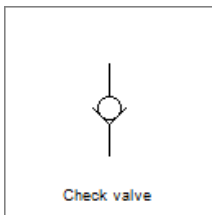
Shuttle valve



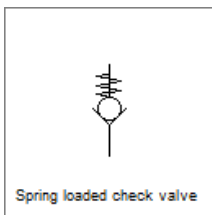
Two pressure valve



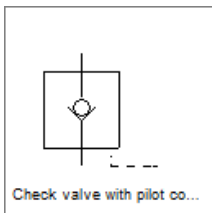
Quick exhaust valve



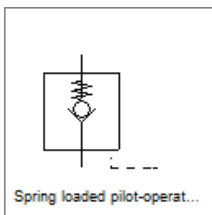
Check valve



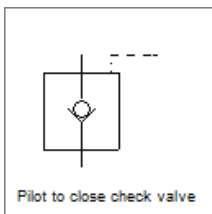
Spring loaded check valve



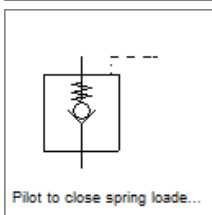
Check valve with pilot control



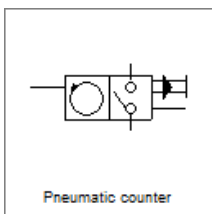
Spring loaded pilot-operated check valve



Pilot to close check valve



Pilot to close spring loaded spring loaded valve



Pneumatic counter