

Knižnica programu FluidSIM - PNEUMATIKA - 05 Mechanically Operated :)

Pneumatic

[Supply Elements 01/15](#)

[Actuators 02/11](#)

[Frequently used cylinders 03/9](#)

Valves

[Configurable directional valves 04/6](#)

Frequently Used Way Valves

Mechanically Operated 05/9

[Pneumatically Operated 06/6](#)

[Solenoid Operated 07/8](#)

[Shutoff Valves and Flow Control Valves 08/17](#)

[Pressure Control Valves 09/9](#)

[Proportion valves 10/2](#)

[Valve Groups 11/8](#)

[Measuring Instruments and Sensors 12/10](#)

Electrical Controls

[Actuators 13/2](#)

[Power Supply 14/4](#)

[Measuring Instruments and Sensors 15/9](#)

[Relays 16/7](#)

Switches

[Manually Operated 17/6](#)

[General Switches 18/3](#)

[Proximity switches 19/4](#)

[Controller 20/3](#)

[Ladder Symbols 21/12](#)

[Digital Technique 22/28](#)

[EasyPort/CPD/DDE 23/4](#)

[GRAFSET 24/6](#)

[Miscellaneous 25/10](#)

Mechanically Operated

3/2-way valve with pushbutton

3/2-way valve with pushbutton

3/2-way valve, manually operated

5/2 valve with selection switch

3/2-way roller lever valve

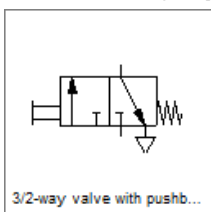
3/2-way idle return roller lever valve

Pneumatic proximity switch, solenoid operated

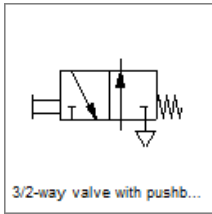
Pressurizing valve

3/2-way roller lever valve

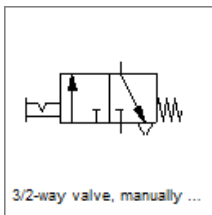
Mechanically Operated



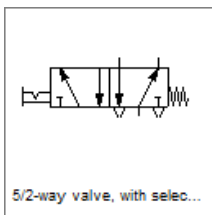
3/2-way valve with pushbutton



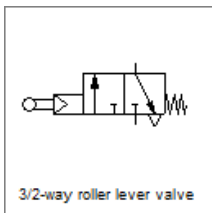
3/2-way valve with pushbutton



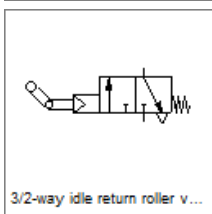
3/2-way valve, manually operated



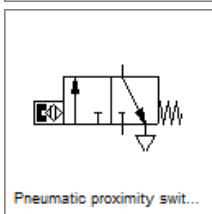
5/2 valve with selection switch



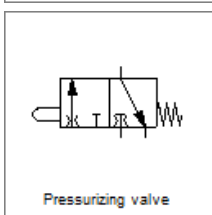
3/2-way roller lever valve



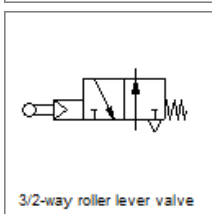
3/2-way idle return roller lever valve



Pneumatic proximity switch, solenoid operated



Pressurizing valve



3/2-way roller lever valve