

Knižnica programu FluidSIM - PNEUMATIKA - 11 Valve Groups :)

Pneumatic

[Supply Elements 01/15](#)

[Actuators 02/11](#)

[Frequently used cylinders 03/9](#)

Valves

[Configurable directional valves 04/6](#)

Frequently Used Way Valves

[Mechanically Operated 05/9](#)

[Pneumatically Operated 06/6](#)

[Solenoid Operated 07/8](#)

[Shutoff Valves and Flow Control Valves 08/17](#)

[Pressure Control Valves 09/9](#)

[Proportion valves 10/2](#)

Valve Groups 11/8

[Measuring Instruments and Sensors 12/10](#)

Electrical Controls

[Actuators 13/2](#)

[Power Supply 14/4](#)

[Measuring Instruments and Sensors 15/9](#)

[Relays 16/7](#)

Switches

[Manually Operated 17/6](#)

[General Switches 18/3](#)

[Proximity switches 19/4](#)

[Controller 20/3](#)

[Ladder Symbols 21/12](#)

[Digital Technique 22/28](#)

[EasyPort/CPD/DDE 23/4](#)

[GRAFSET 24/6](#)

[Miscellaneous 25/10](#)

Valve Groups

Stepper Module, type TAA

Stepper Module, type TAB

Two-hand control block

Quickstepper

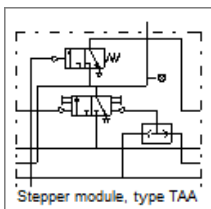
Pressure sequence valve

Time delay valve, normally closed

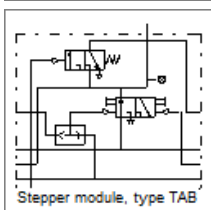
Time delay valve, normally open

Adjustable vacuum actuator valve

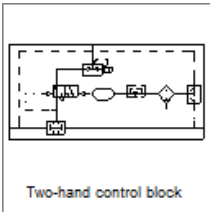
Valve Groups



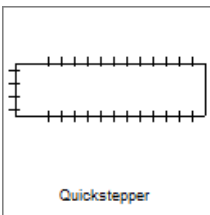
Stepper Module, type TAA



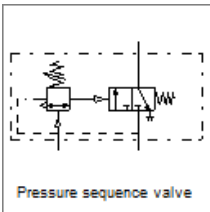
Stepper Module, type TAB



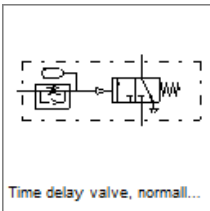
Two-hand control block



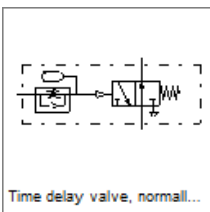
Quickstepper



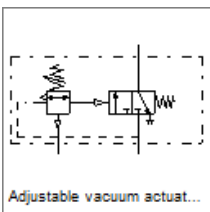
Pressure sequence valve



Time delay valve, normally closed



Time delay valve, normally open



Adjustable vacuum actuator valve