

# Knižnica programu FluidSIM - HYDRAULIKA - 08 Proportional valves :)

## Hydraulic

[Supply Elements 01/14](#)

[Actuators 02/7](#)

Valves

[Configurable directional valves 03/6](#)

Frequently Used Way Valves

[Mechanically Operated 04/11](#)

[Solenoid Operated 05/9](#)

[Shutoff Valves and Flow Control Valves 06/17](#)

[Pressure Control Valves 07/14](#)

**Proportional valves 08/9**

[Measuring instruments and Sensors 09/9](#)

Electrical controls

[Actuators 10/1](#)

[Power Supply 11/4](#)

[Measuring instruments and Sensors 12/8](#)

[Relays 13/9](#)

Switches

[Manually Operated 14/6](#)

[General Switches 15/3](#)

[Proximity Switches 16/4](#)

[Controller 17/3](#)

[Ladder Symbols 18/12](#)

[Digital Technique 19/28](#)

[EasyPort/OPC/DDE 20/2](#)

[GRAFCE 21/6](#)

[Miscellaneous 22/10](#)

## Proportional valves

Proportional amplifier, 2-channel

4/3-way proportional valve

Proportional amplifier, 1-channel

Proportional throttle valve

Proportional pressure relief valve

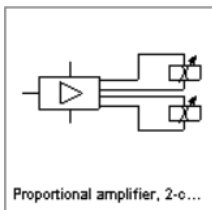
Pilot-operated proportional pressure relief valve

Pilot-operated proportional pressure relief reducing valve

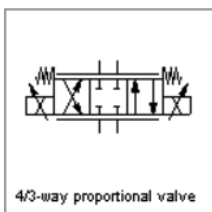
Proportional valve solenoid, position controlled

4/3-way regulating valve

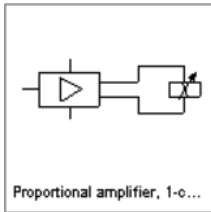
## Proportional valves



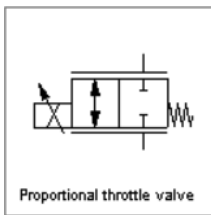
Proportional amplifier, 2-channel



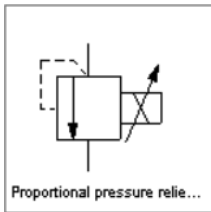
4/3-way proportional valve



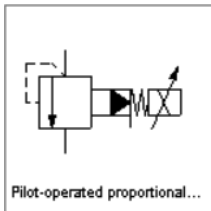
Proportional amplifier, 1-channel



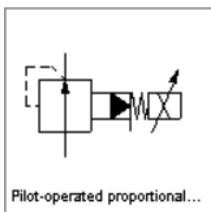
Proportional throttle valve



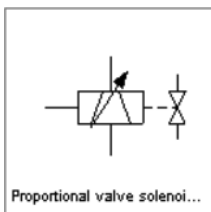
Proportional pressure relief valve



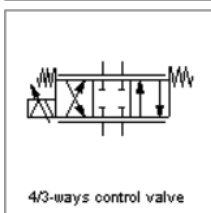
Pilot-operated proportional pressure relief valve



Pilot-operated proportional pressure relief reducing valve



Proportional valve solenoid, position controlled



4/3-way regulating valve