

# Knižnica programu FluidSIM - HYDRAULIKA - 06 Shutoff Valves and Flow Control Valves :)

## Hydraulic

[Supply Elements 01/14](#)

[Actuators 02/7](#)

Valves

[Configurable directional valves 03/6](#)

Frequently Used Way Valves

[Mechanically Operated 04/11](#)

[Solenoid Operated 05/9](#)

**[Shutoff Valves and Flow Control Valves 06/17](#)**

[Pressure Control Valves 07/14](#)

[Proportional valves 08/9](#)

[Measuring instruments and Sensors 09/9](#)

Electrical controls

[Actuators 10/1](#)

[Power Supply 11/4](#)

[Measuring instruments and Sensors 12/8](#)

[Relays 13/9](#)

Switches

[Manually Operated 14/6](#)

[General Switches 15/3](#)

[Proximity Switches 16/4](#)

[Controller 17/3](#)

[Ladder Symbols 18/12](#)

[Digital Technique 19/28](#)

[EasyPort/OPC/DDE 20/2](#)

[GRAFCET 21/6](#)

[Miscellaneous 22/10](#)

## Shutoff Valves and Flow Control Valves

Nozzle

Throttle valve

Orifice

Variable orifice

Shutoff valve

One-way flow control valve

Check valve

Check valve, spring loaded

Check valve with pilot control

Spring loaded pilot operated check valve

Pilot to close check valve

Pilot to close spring loaded check valve

2-way flow control valve

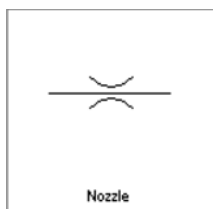
3-way flow control valve

Shuttle valve

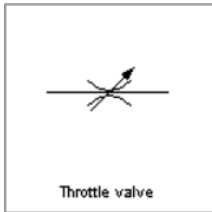
Two-pressure valve

Flow divider valve

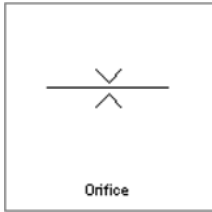
## Shutoff Valves and Flow Control Valves



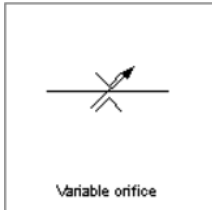
Nozzle



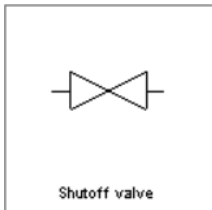
Throttle valve



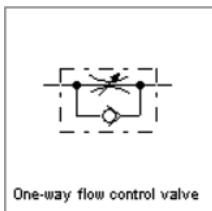
Orifice



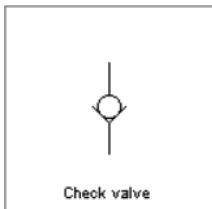
Variable orifice



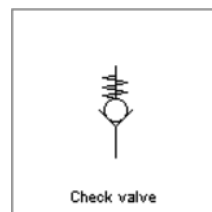
Shutoff valve



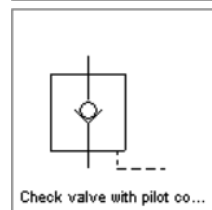
One-way flow control valve



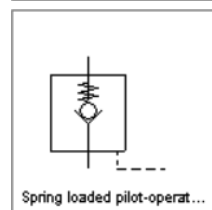
Check valve



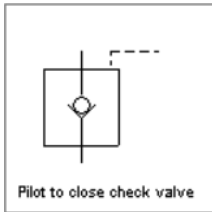
Check valve, spring loaded



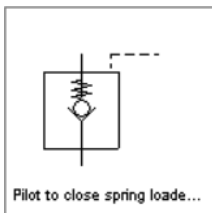
Check valve with pilot control



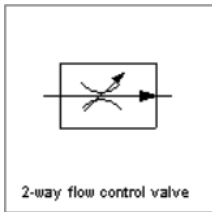
Spring loaded pilot operated check valve



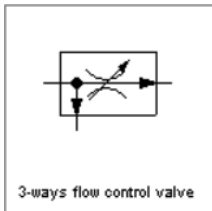
Pilot to close check valve



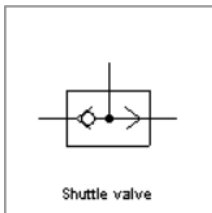
Pilot to close spring loaded check valve



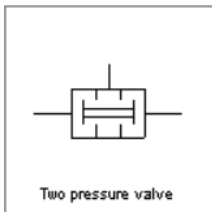
2-way flow control valve



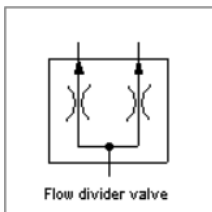
3-way flow control valve



Shuttle valve



Two-pressure valve



Flow divider valve