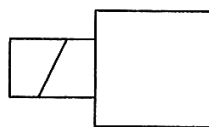


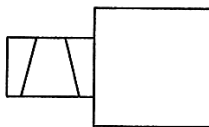
Symbols and signs of e-hydraulics used in hydraulic schemes :)

Methods of control of distribution valves in e-hydraulics

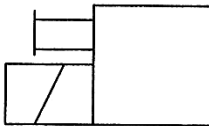
electromagnet with one winding



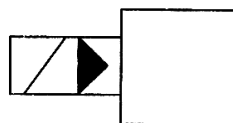
electromagnet with two windings, which act against each other



electromagnet with manual emergency (auxiliary) control

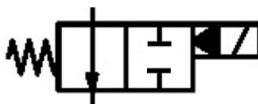


two-stage (pre-regulated (with auxiliary control)) valve; pre-regulated distribution valve is controlled electromagnetically

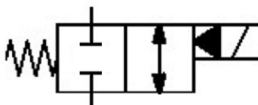


Examples of valve symbols in e-hydraulics

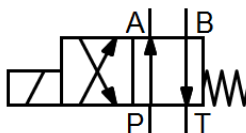
2/2-way valve two-stage, normally open



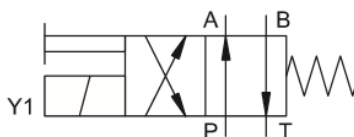
2/2-way valve two-stage, normally closed



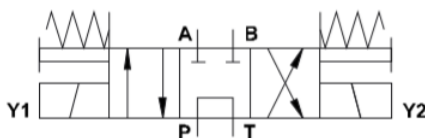
4/2-way valve electrically controlled



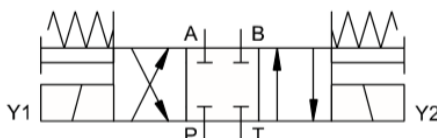
4/2-way valve electrically and manually controlled



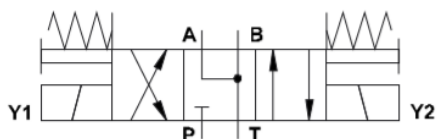
4/3-way valve electrically and manually controlled, with bypass center position



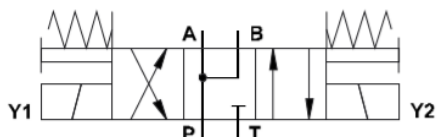
4/3-way valve electrically and manually controlled, with closed center position



4/3-way valve electrically and manually controlled, in the center position of the connection is unloaded

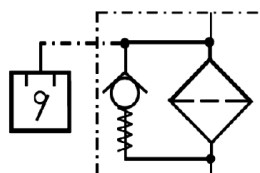


4/3-way valve electrically and manually controlled, with center position under pressure



Ďalšie značky

Filter s obtokovým ventilom a elektrickým spínačom pri znečistení



Všeobecné elektrické značky

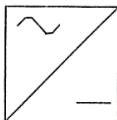
jednosmerné napätie, jednosmerný prúd



striedavé napätie, striedavý prúd



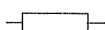
usmerňovač



permanentný magnet



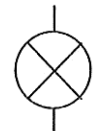
rezistor (odpor) všeobecne



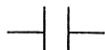
cievka (indukčnosť)



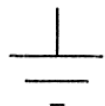
svetelná signalizácia



kondenzátor



uzemnenie všeobecne

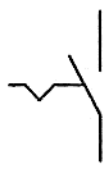


Obvodové členy

spínač



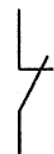
spínač s aretáciou



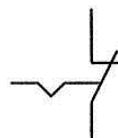
spínač, ktorý spína s oneskorením

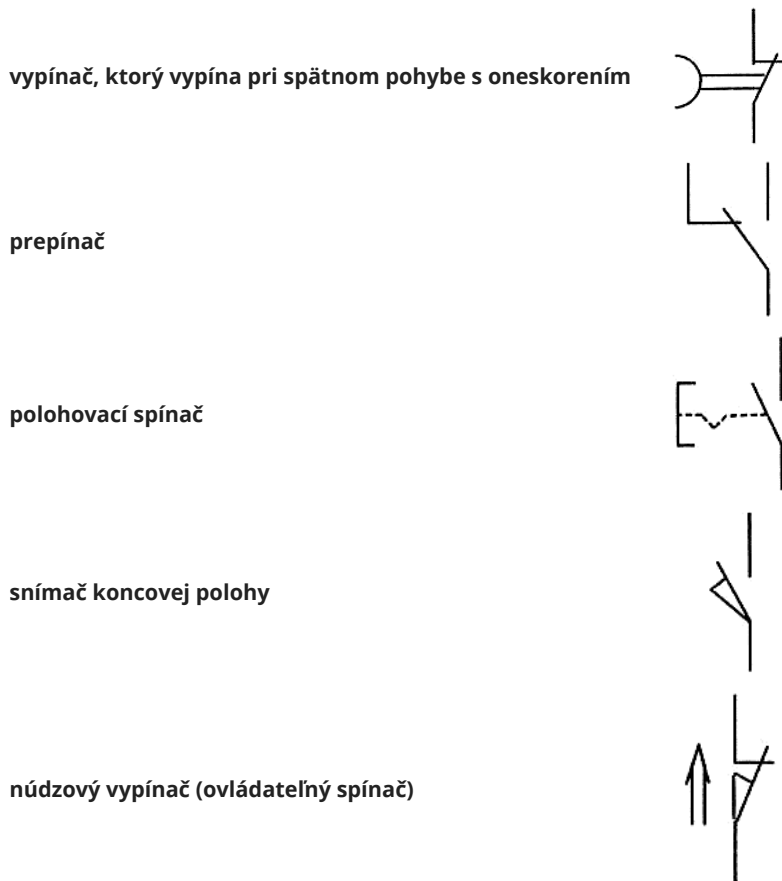


vypínač

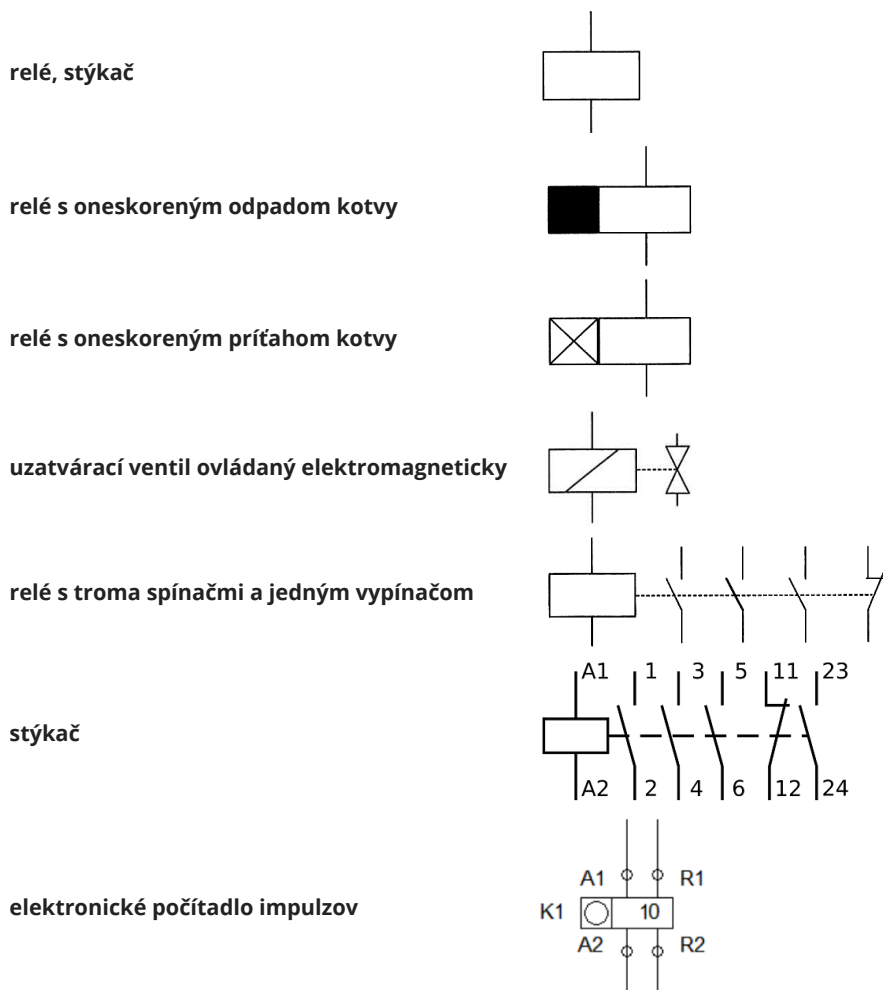


vypínač s aretáciou



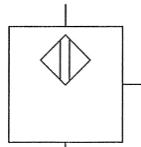


Elektromagnetické obvodové prvky

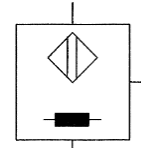


Bezdotykové spínače

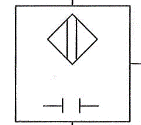
všeobecná značka bezdotykového spínača



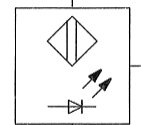
indukčný bezdotykový spínač



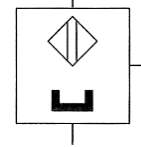
kapacitný bezdotykový spínač



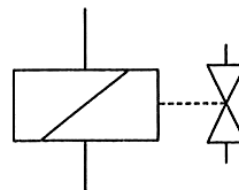
optický bezdotykový spínač



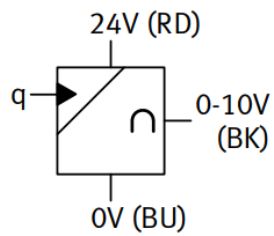
magnetický bezdotykový spínač



elektromagnetický ventil (cievka ventilu) - všeobecná značka



analogový prevodník prietok/napätie



[Základné \(univerzálne\) elektrosúčiastky](#)