

# Knižnica programu FluidSIM - HYDRAULIKA - 05 Solenoid Operated :)

## Hydraulic

[Supply Elements 01/14](#)

[Actuators 02/7](#)

Valves

[Configurable directional valves 03/6](#)

Frequently Used Way Valves

[Mechanically Operated 04/11](#)

**Solenoid Operated 05/9**

[Shutoff Valves and Flow Control Valves 06/17](#)

[Pressure Control Valves 07/14](#)

[Proportional valves 08/9](#)

[Measuring instruments and Sensors 09/9](#)

Electrical controls

[Actuators 10/1](#)

[Power Supply 11/4](#)

[Measuring instruments and Sensors 12/8](#)

[Relays 13/9](#)

Switches

[Manually Operated 14/6](#)

[General Switches 15/3](#)

[Proximity Switches 16/4](#)

[Controller 17/3](#)

[Ladder Symbols 18/12](#)

[Digital Technique 19/28](#)

[EasyPort/OPC/DDE 20/2](#)

[GRAFCET 21/6](#)

[Miscellaneous 22/10](#)

## Solenoid Operated

Valve solenoid

4/2-way solenoid valve

4/2-way solenoid valve

4/3-way solenoid valve with shutoff position

4/3-way solenoid valve with shutoff position

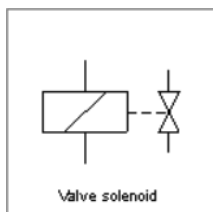
4/3-way solenoid valve with bypass position

4/3-way solenoid valve with bypass position

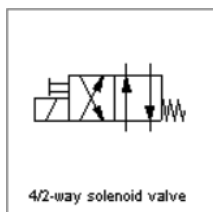
4/3-way solenoid valve with floating position

4/3-way solenoid valve with floating position

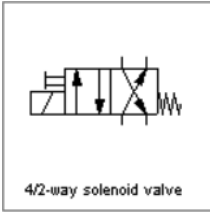
## Solenoid Operated



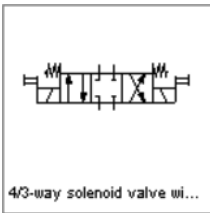
Valve solenoid



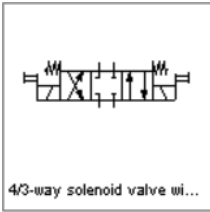
4/2-way solenoid valve



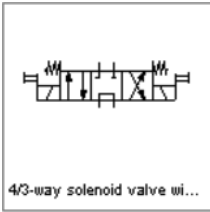
4/2-way solenoid valve



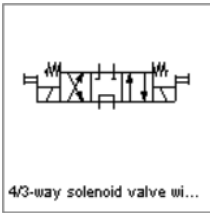
4/3-way solenoid valve with shutoff position



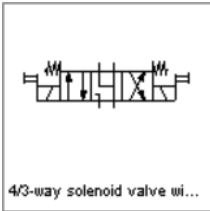
4/3-way solenoid valve with shutoff position



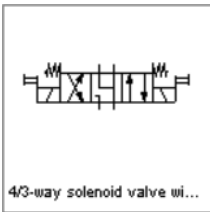
4/3-way solenoid valve with bypass position



4/3-way solenoid valve with bypass position



4/3-way solenoid valve with floating position



4/3-way solenoid valve with floating position