

Knižnica programu FluidSIM - HYDRAULIKA - 03 Configurable directional valves :)

Hydraulic

[Supply Elements 01/14](#)

[Actuators 02/7](#)

Valves

Configurable directional valves 03/6

Frequently Used Way Valves

[Mechanically Operated 04/11](#)

[Solenoid Operated 05/9](#)

[Shutoff Valves and Flow Control Valves 06/17](#)

[Pressure Control Valves 07/14](#)

[Proportional valves 08/9](#)

[Measuring instruments and Sensors 09/9](#)

Electrical controls

[Actuators 10/1](#)

[Power Supply 11/4](#)

[Measuring instruments and Sensors 12/8](#)

[Relays 13/9](#)

Switches

[Manually Operated 14/6](#)

[General Switches 15/3](#)

[Proximity Switches 16/4](#)

[Controller 17/3](#)

[Ladder Symbols 18/12](#)

[Digital Technique 19/28](#)

[EasyPort/OPC/DDE 20/2](#)

[GRAFCET 21/6](#)

[Miscellaneous 22/10](#)

Configurable directional valves

2/h Way Valve

3/h Way Valve

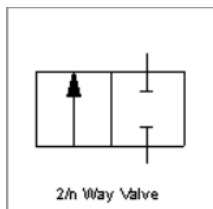
4/h Way Valve

5/h Way Valve

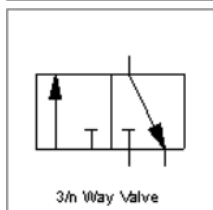
6/h-way directional valve

8/h-way directional valve

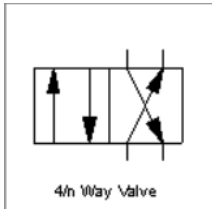
Configurable directional valves



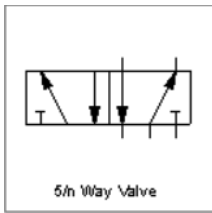
2/h Way Valve



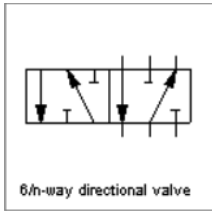
3/h Way Valve



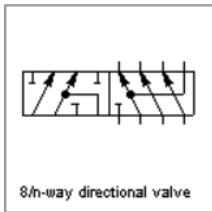
4/h Way Valve



5/h Way Valve



6/h-way directional valve



8/h-way directional valve