

Knižnica programu FluidSIM - HYDRAULIKA - 02 Actuators :)

Hydraulic

[Supply Elements 01/14](#)

Actuators 02/7

Valves

[Configurable directional valves 03/6](#)

Frequently Used Way Valves

[Mechanically Operated 04/11](#)

[Solenoid Operated 05/9](#)

[Shutoff Valves and Flow Control Valves 06/17](#)

[Pressure Control Valves 07/14](#)

[Proportional valves 08/9](#)

[Measuring instruments and Sensors 09/9](#)

Electrical controls

[Actuators 10/1](#)

[Power Supply 11/4](#)

[Measuring instruments and Sensors 12/8](#)

[Relays 13/9](#)

Switches

[Manually Operated 14/6](#)

[General Switches 15/3](#)

[Proximity Switches 16/4](#)

[Controller 17/3](#)

[Ladder Symbols 18/12](#)

[Digital Technique 19/28](#)

[EasyPort/OPC/DDE 20/2](#)

[GRAFCET 21/6](#)

[Miscellaneous 22/10](#)

Actuators

Distance rule

Single acting cylinder

Double acting cylinder

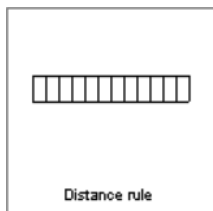
Double acting cylinder with shock adsorber at stroke end

Double acting cylinder with in and out piston rod and shock adsorber at stroke end

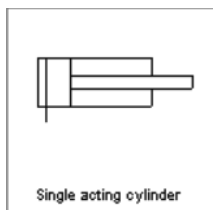
Hydraulic motor

Semi-rotary actuator

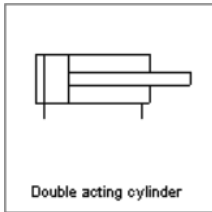
Actuators



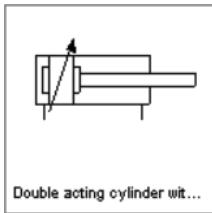
Distance rule



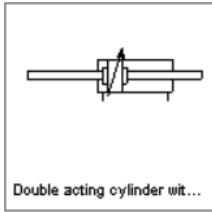
Single acting cylinder



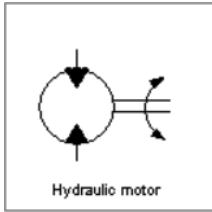
Double acting cylinder



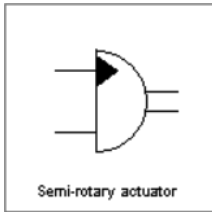
Double acting cylinder with shock adsorber at stroke end



Double acting cylinder with in and out piston rod and shock adsorber at stroke end



Hydraulic motor



Semi-rotary actuator