

# Knižnica programu FluidSIM - HYDRAULIKA - 04 Mechanically Operated :)

## Hydraulic

[Supply Elements 01/14](#)

[Actuators 02/7](#)

Valves

[Configurable directional valves 03/6](#)

Frequently Used Way Valves

**Mechanically Operated 04/11**

[Solenoid Operated 05/9](#)

[Shutoff Valves and Flow Control Valves 06/17](#)

[Pressure Control Valves 07/14](#)

[Proportional valves 08/9](#)

[Measuring instruments and Sensors 09/9](#)

Electrical controls

[Actuators 10/1](#)

[Power Supply 11/4](#)

[Measuring instruments and Sensors 12/8](#)

[Relays 13/9](#)

Switches

[Manually Operated 14/6](#)

[General Switches 15/3](#)

[Proximity Switches 16/4](#)

[Controller 17/3](#)

[Ladder Symbols 18/12](#)

[Digital Technique 19/28](#)

[EasyPort/OPC/DDE 20/2](#)

[GRAFCE 21/6](#)

[Miscellaneous 22/10](#)

## Mechanically Operated

4/3-way hand-lever valve with shutoff position

3/2-way hand-lever valve

4/2-way hand-lever valve

4/2-way hand-lever valve

4/3-way hand-lever valve with shutoff position

4/3-way hand-lever valve with bypass position

4/3-way hand-lever valve with bypass position

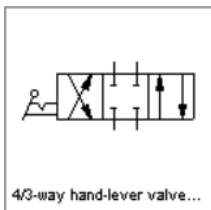
4/3-way hand-lever valve with floating position

4/3-way hand-lever valve with floating position

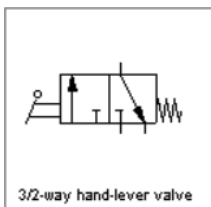
2/2-way stem-Actuated valve

2/2-way stem-Actuated valve

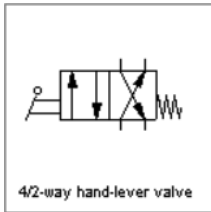
## Mechanically Operated



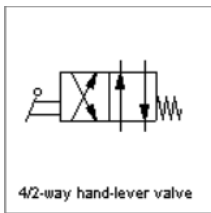
4/3-way hand-lever valve with shutoff position



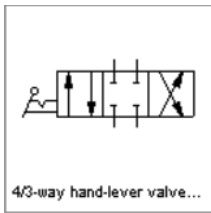
3/2-way hand-lever valve



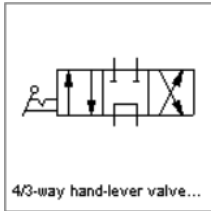
4/2-way hand-lever valve



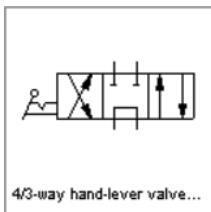
4/2-way hand-lever valve



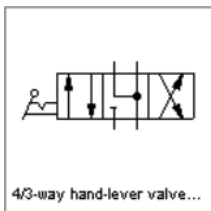
4/3-way hand-lever valve with shutoff position



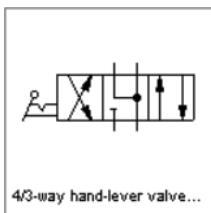
4/3-way hand-lever valve with bypass position



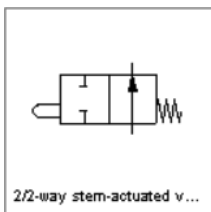
4/3-way hand-lever valve with bypass position



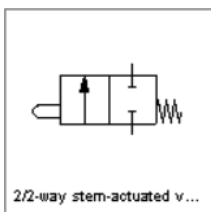
4/3-way hand-lever valve with floating position



4/3-way hand-lever valve with floating position



2/2-way stem-Actuated valve



2/2-way stem-Actuated valve