

Knižnica programu FluidSIM - HYDRAULIKA - 01 Supply Elements :)

Hydraulic

Supply Elements 01/14

[Actuators 02/7](#)

Valves

[Configurable directional valves 03/6](#)

Frequently Used Way Valves

[Mechanically Operated 04/11](#)

[Solenoid Operated 05/9](#)

[Shutoff Valves and Flow Control Valves 06/17](#)

[Pressure Control Valves 07/14](#)

[Proportional valves 08/9](#)

[Measuring instruments and Sensors 09/9](#)

Electrical controls

[Actuators 10/1](#)

[Power Supply 11/4](#)

[Measuring instruments and Sensors 12/8](#)

[Relays 13/9](#)

Switches

[Manually Operated 14/6](#)

[General Switches 15/3](#)

[Proximity Switches 16/4](#)

[Controller 17/3](#)

[Ladder Symbols 18/12](#)

[Digital Technique 19/28](#)

[EasyPort/OPC/DDE 20/2](#)

[GRAFCE 21/6](#)

[Miscellaneous 22/10](#)

Supply Elements

Pump unit (simplified)

Fixed displacement pump

Variable displacement pump

Tank

Pump unit

Proportional amplifier, 1-channel

Proportional adjustable pump

Reservoir

Reservoir

Diaphragm accumulator with shutoff block

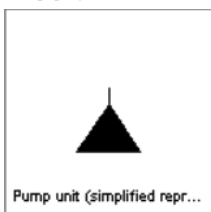
Hose with quick-action coupling

Filter

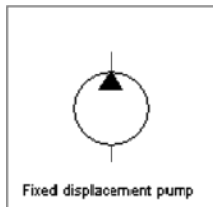
Cooler

Heater

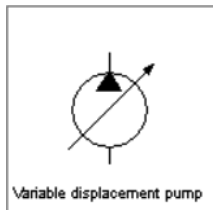
Supply Elements



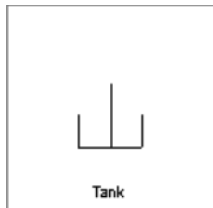
Pump unit (simplified)



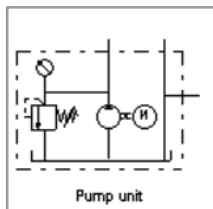
Fixed displacement pump



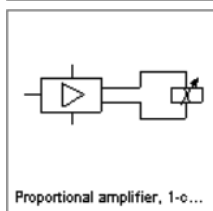
Variable displacement pump



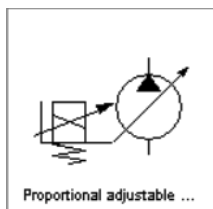
Tank



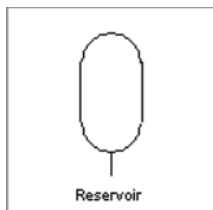
Pump unit



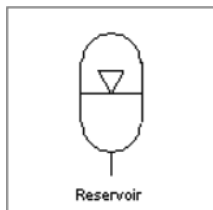
Proportional amplifier, 1-channel



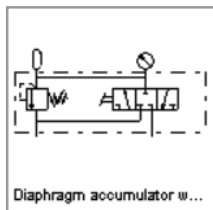
Proportional adjustable pump



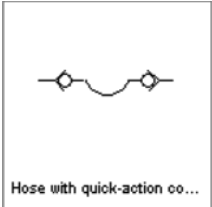
Reservoir



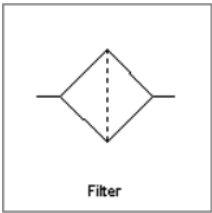
Reservoir



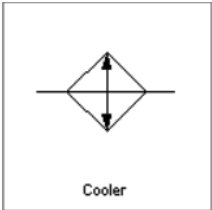
Diaphragm accumulator with shutoff block



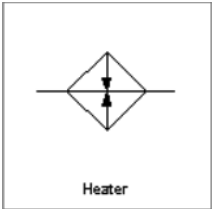
Hose with quick-action coupling



Filter



Cooler



Heater