

# Symboly a značky pneumatiky a e-pneumatiky po anglicky :)

## Contents:

### VALVES

#### AIR OPERATED VALVES

#### MANUAL-MECHANICAL VALVES

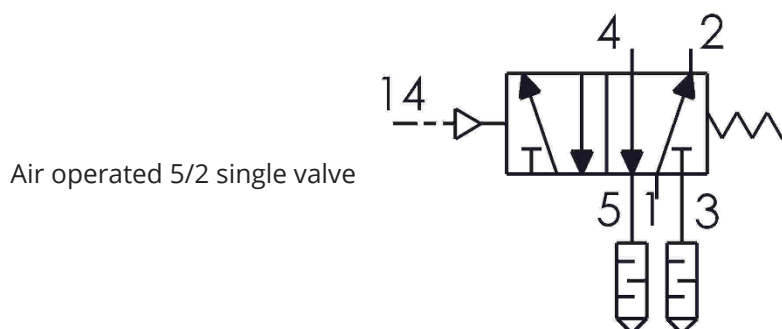
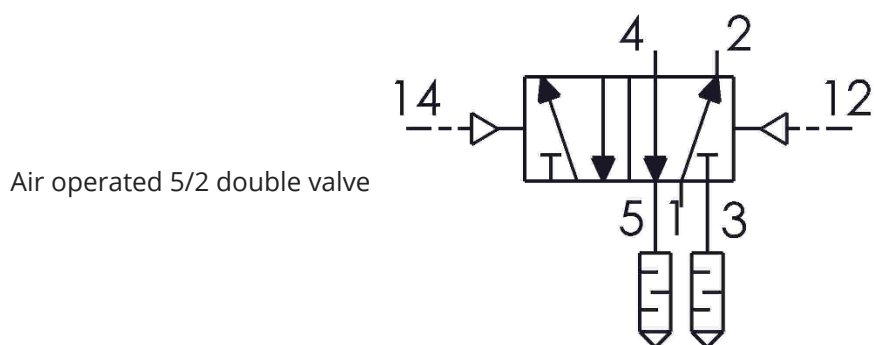
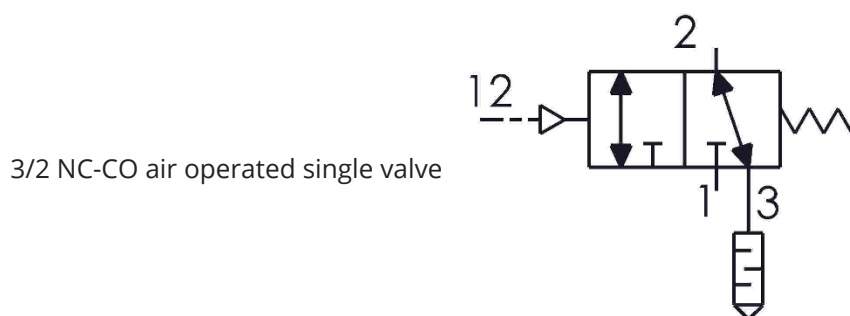
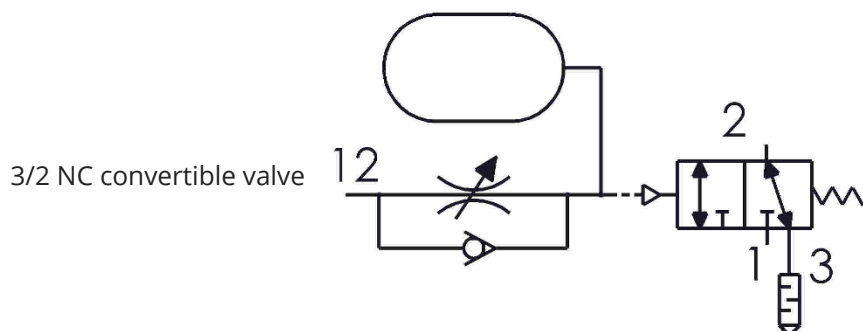
### PNEUMATIC ACTUATORS

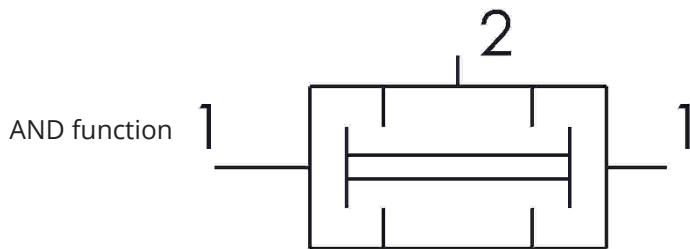
### PNEUMATIC-ELECTROPNEUMATIC COMPONENTS

### MEASURING DEVICES

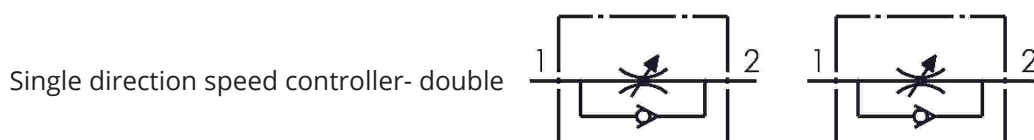
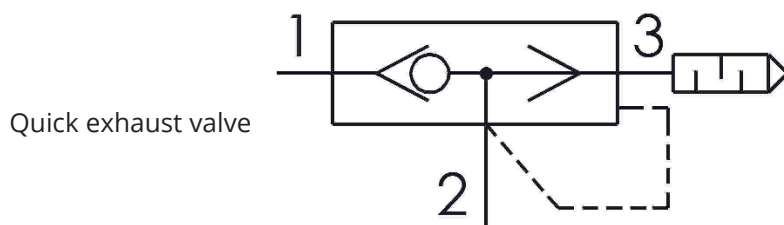
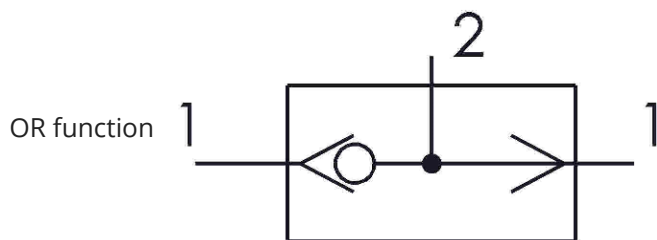
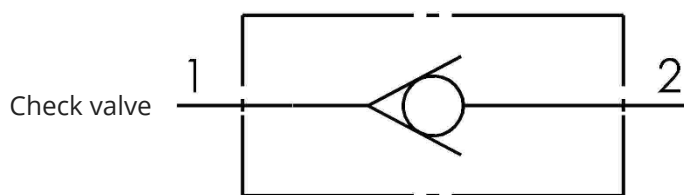
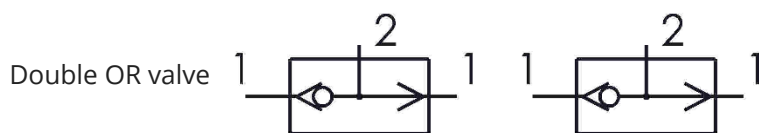
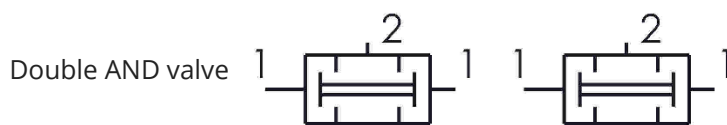
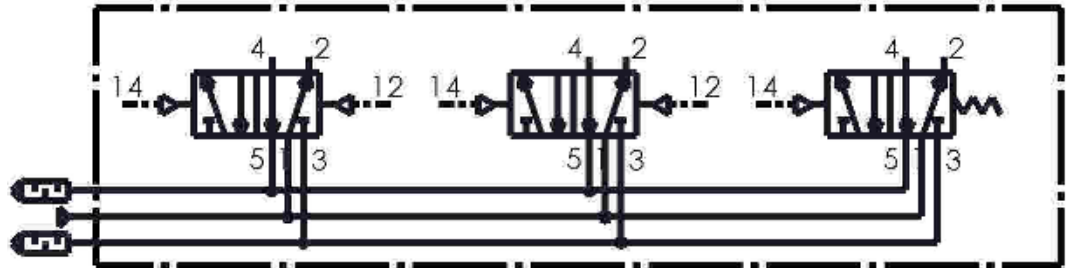
## VALVES

### AIR OPERATED VALVES

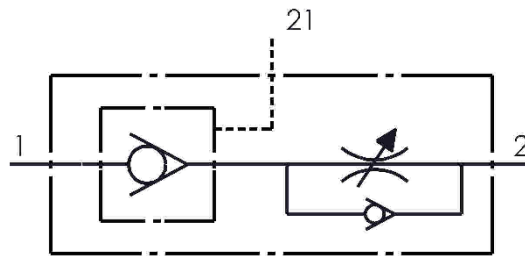




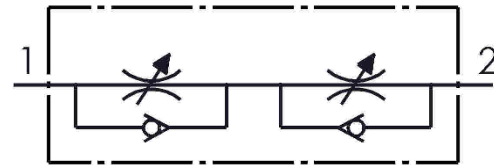
Block of 2 x 5/2 double valves  
+ 1 x 5/2 single valve



Speed controller with controlled check valve

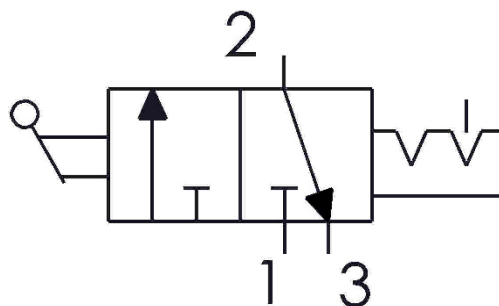


Two direction speed controller for single acting cylinder

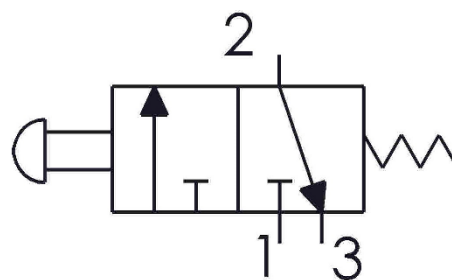


## MANUAL-MECHANICAL VALVES

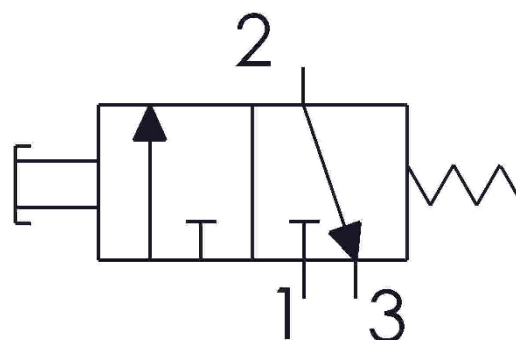
3/2 NC switch operated double valve



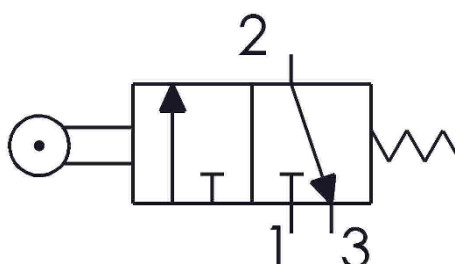
3/2 NC valve operated by an emergency knob



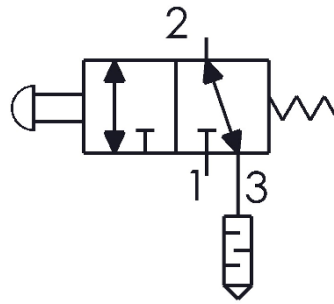
3/2 NC valve operated by push-button



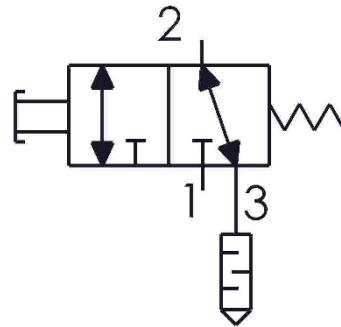
3/2 NC valve operated by roller lever



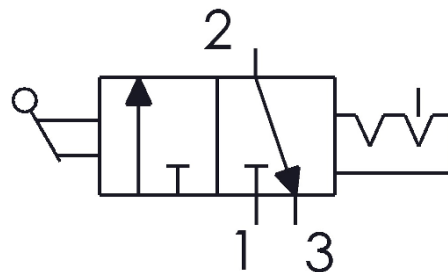
3/2 NC-NO valve operated by a knob



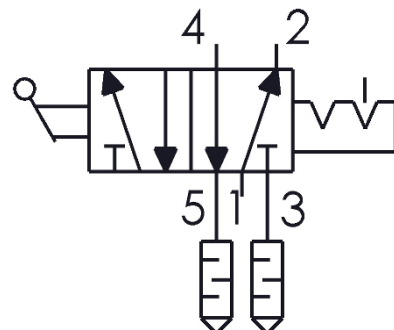
3/2 NC-NO valve operated by a push-button



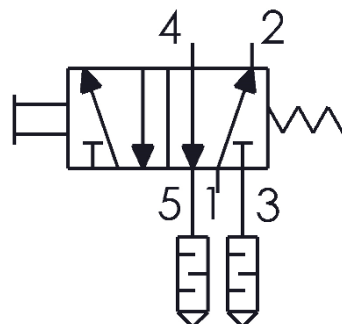
3/2 valve operated by a toggle lever



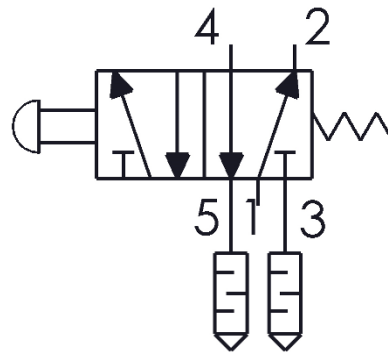
5/2 lever-operated valve



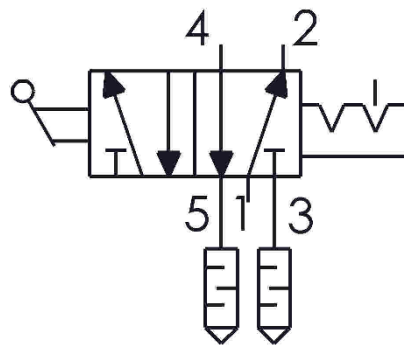
5/2 push-button valve



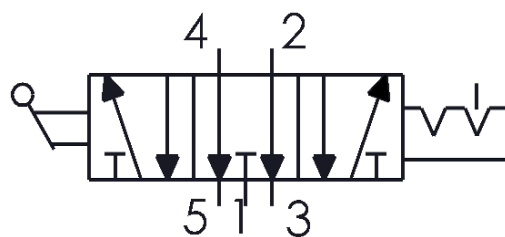
5/2 valve operated by mushroom push-button



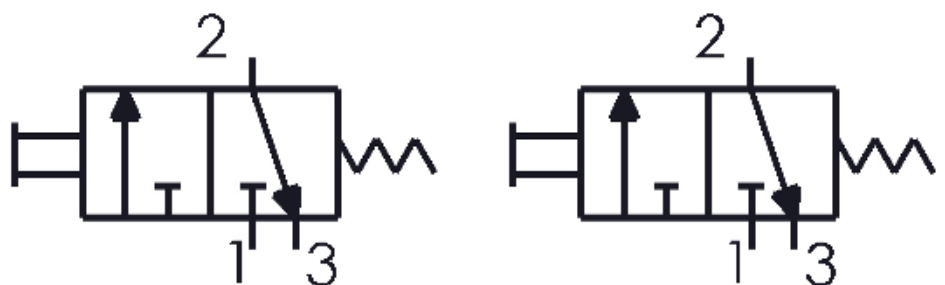
5/2 valve with 2 position selector



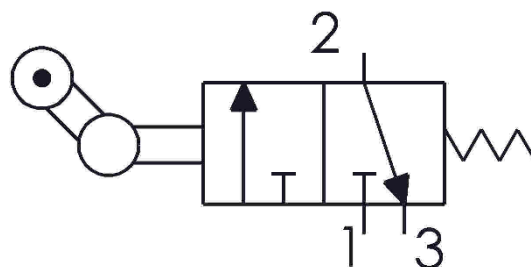
5/3 valve with selector



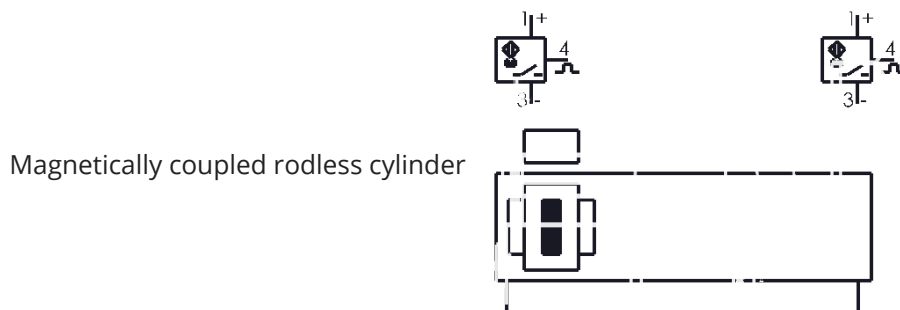
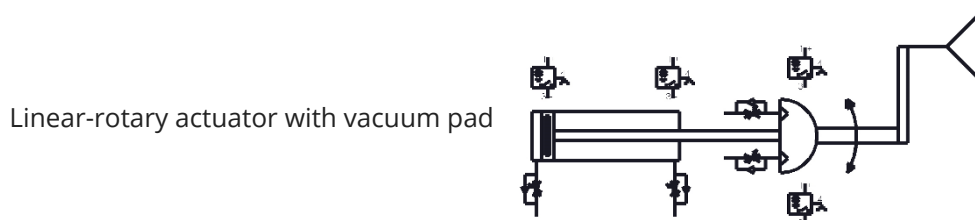
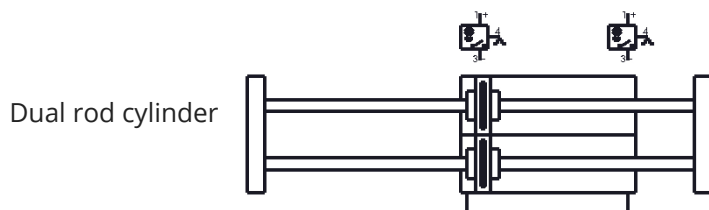
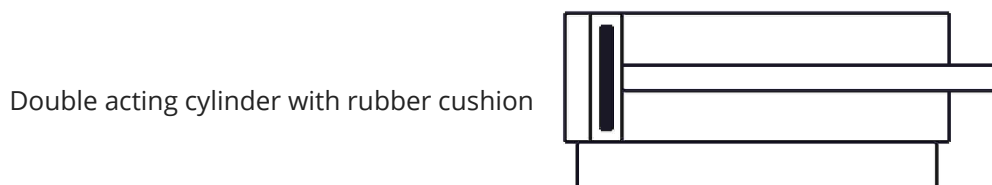
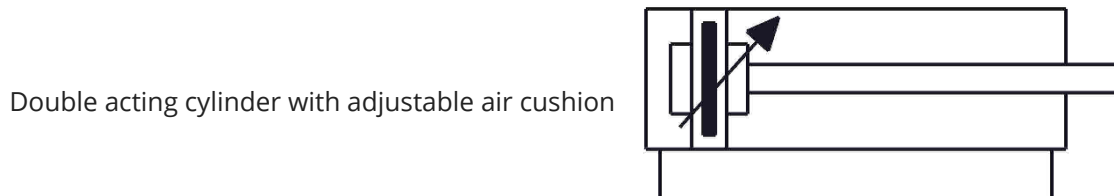
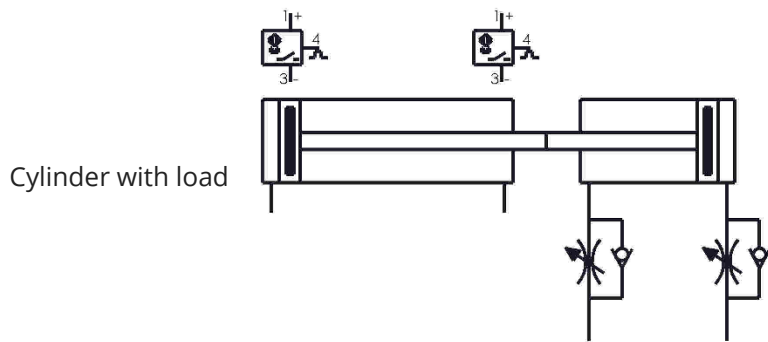
Double 3/2 NC valve operated by a push-button

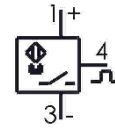
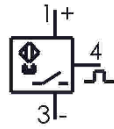


3/2 NC valve operated by one way roller lever

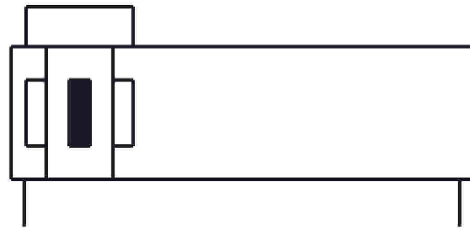


## PNEUMATIC ACTUATORS

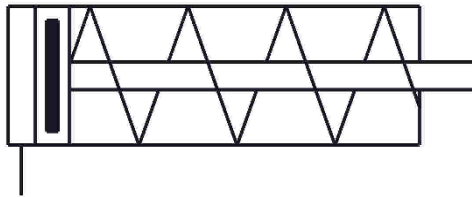




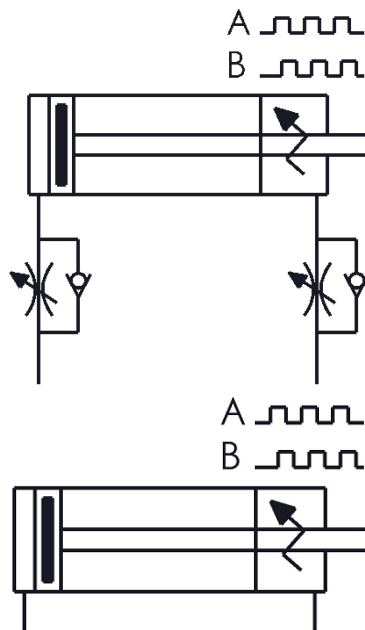
Mechanically coupled rodless cylinder



Single acting cylinder

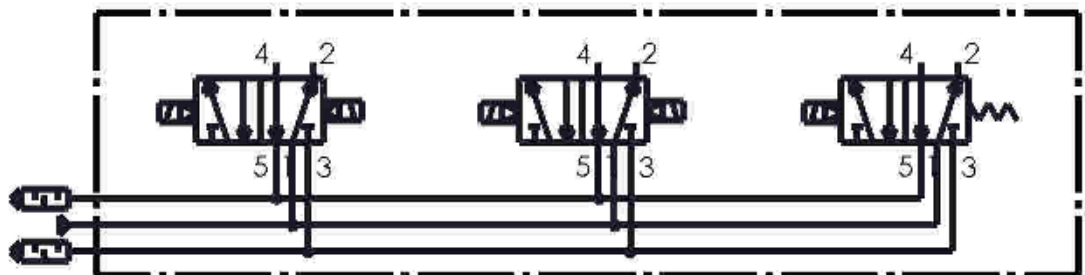


Stroke reading cylinder

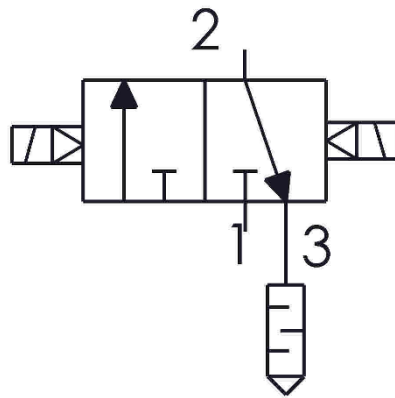


## PNEUMATIC-ELECTROPNEUMATIC COMPONENTS

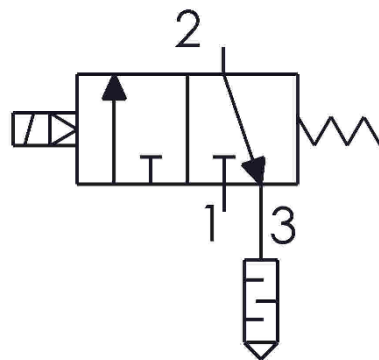
2 solenoid valves  
block\_5-2 double  
and 1 single



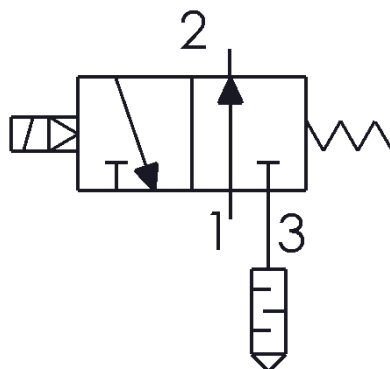
3/2 double solenoid valve



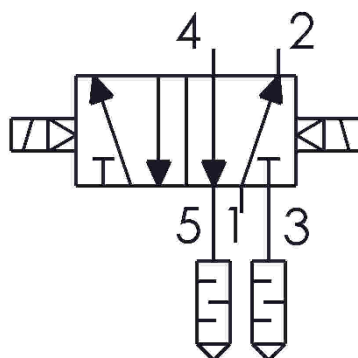
3/2 NC single solenoid valve



3/2 NO single solenoid valve

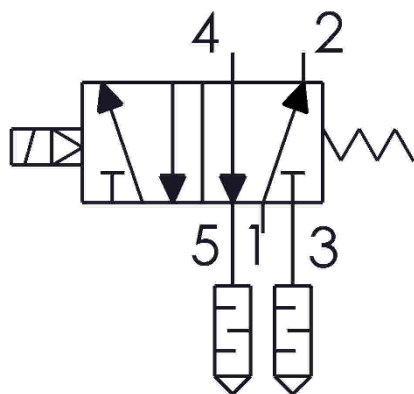


5/2 double solenoid valve

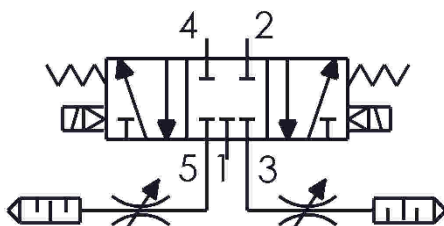




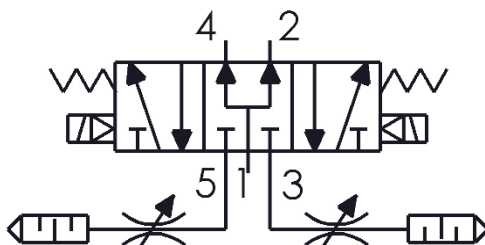
5/2 single solenoid valve



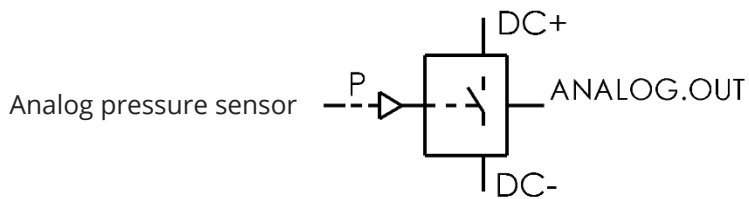
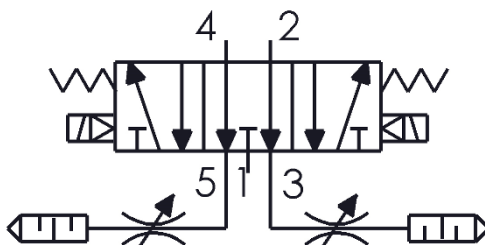
5/3 closed centre solenoid valve



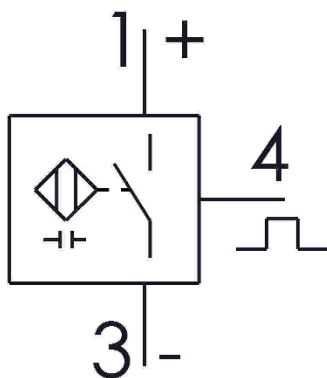
5/3 solenoid pressure valve

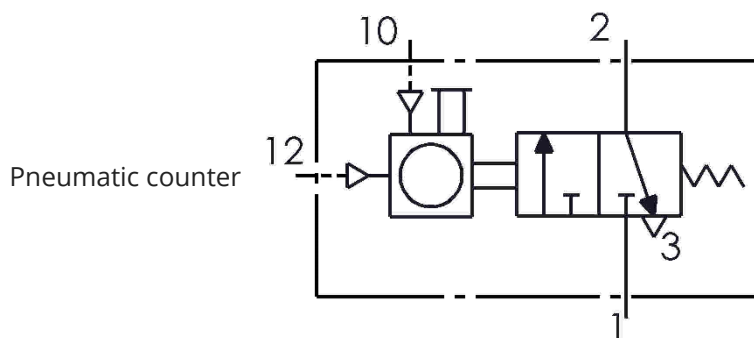
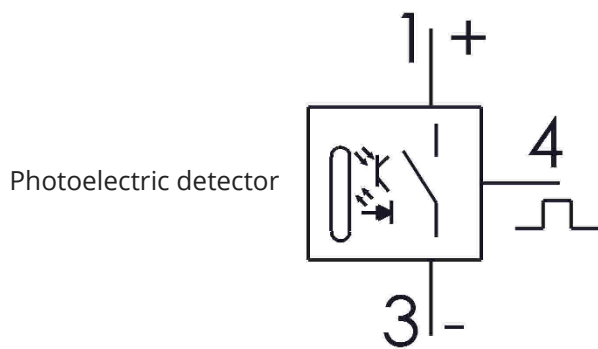
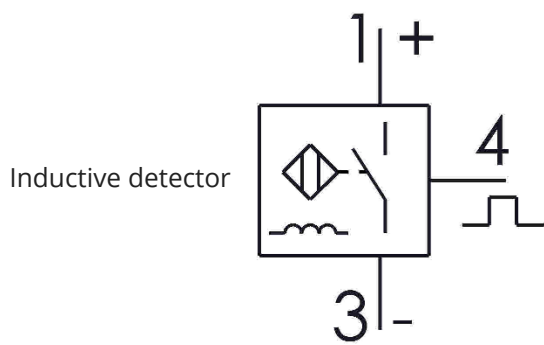
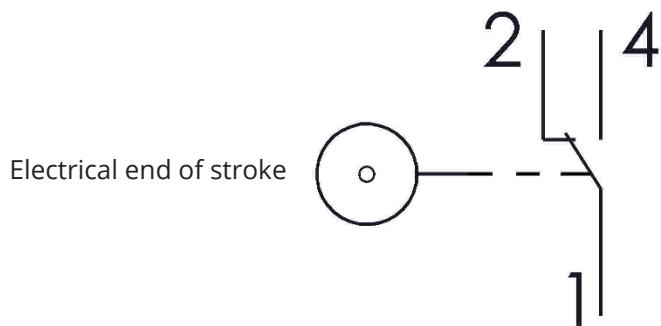
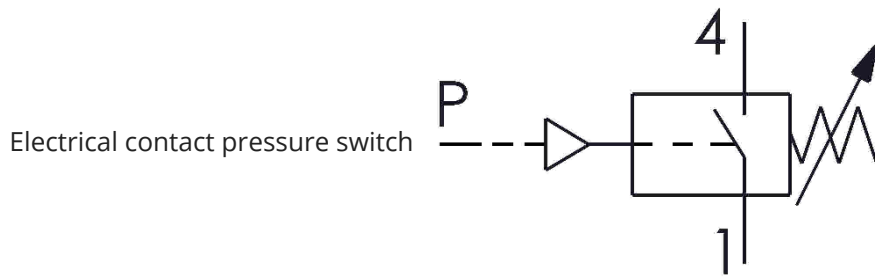


5/3 solenoid valve exhaust centres

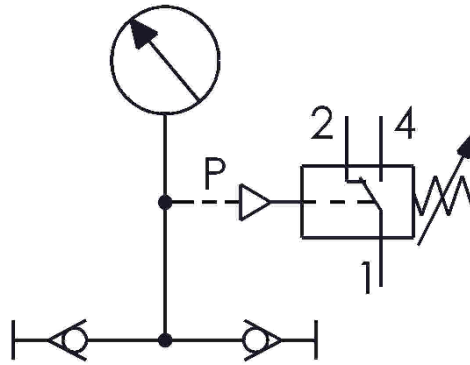


Capacitive detector

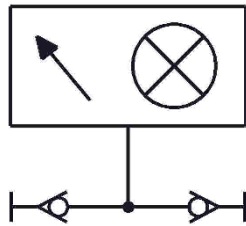




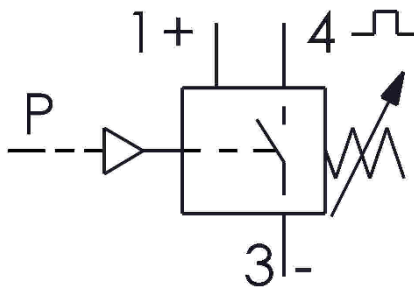
Pressure gauge with electrical contact



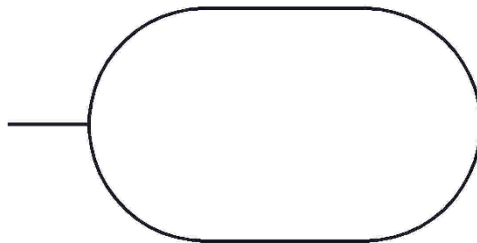
Pressure indicator



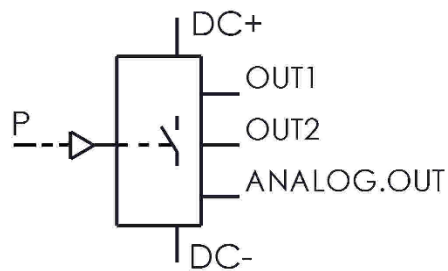
Pressure switch towards transistor



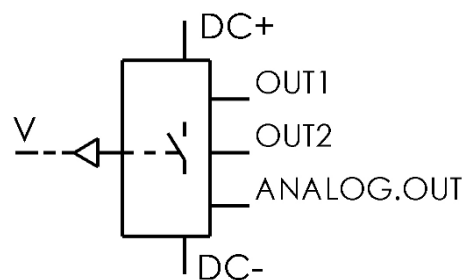
Pressure vessel



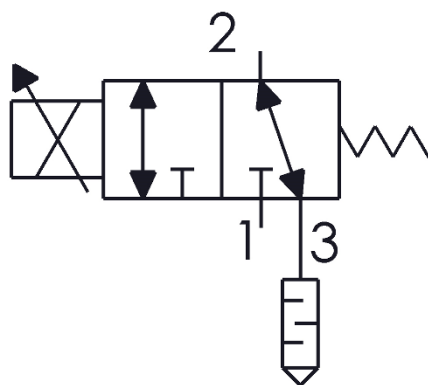
Programmable digital pressure switch



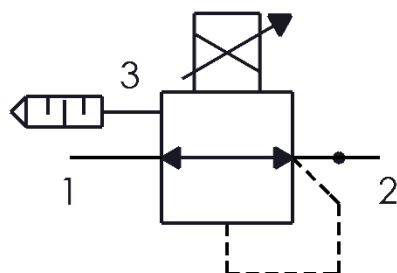
Programmable digital vacuum pressure switch



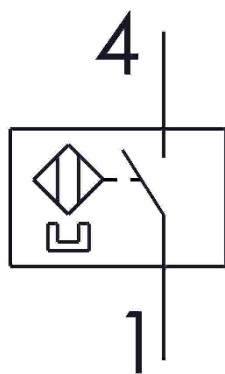
Proportional flow rate valve



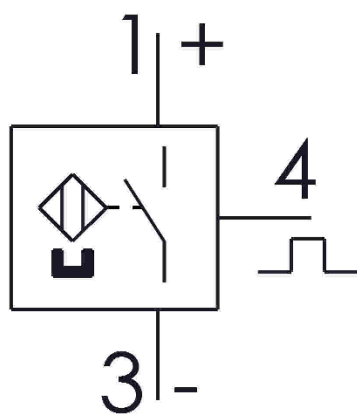
Proportional pressure valve



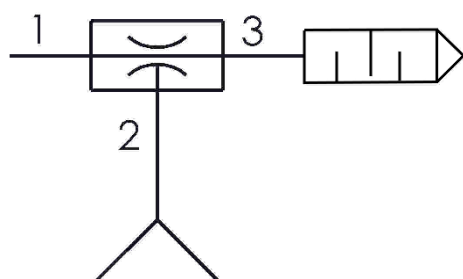
Reed auto switch

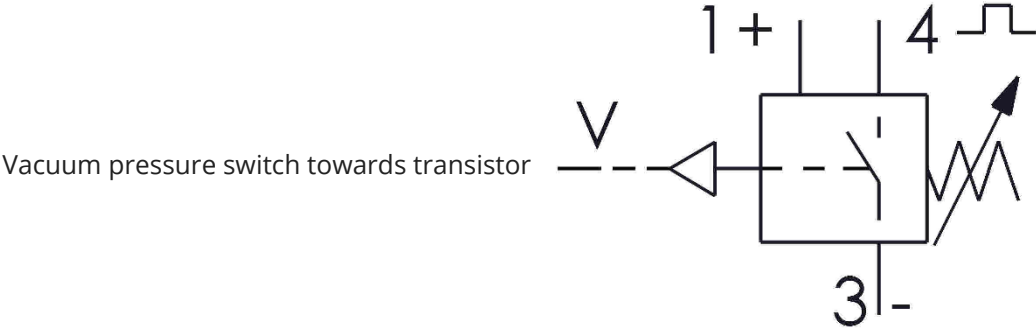


Solid state auto switch



Vacuum ejector with pad





**MEASURING DEVICES**

