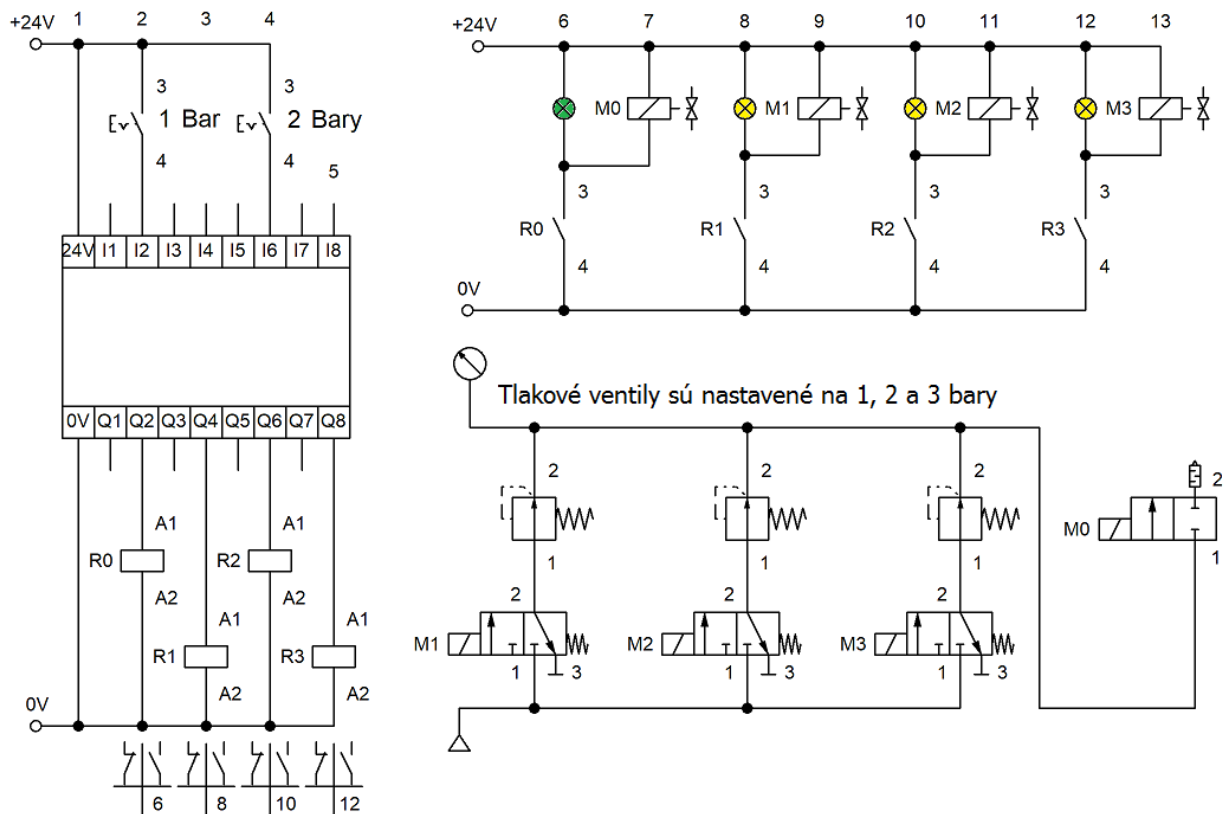
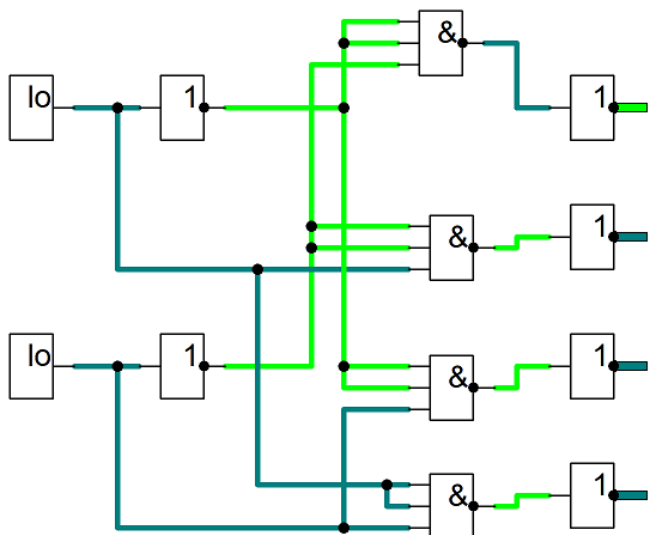
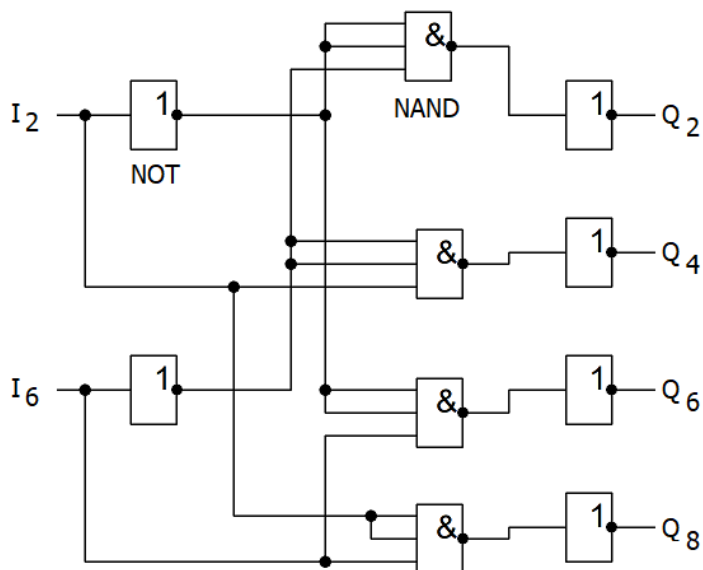
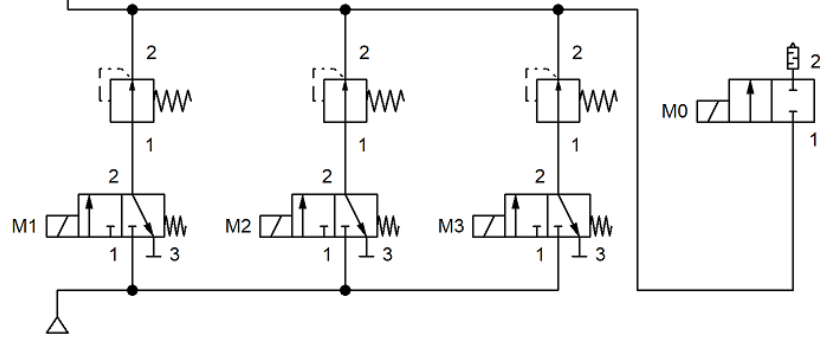
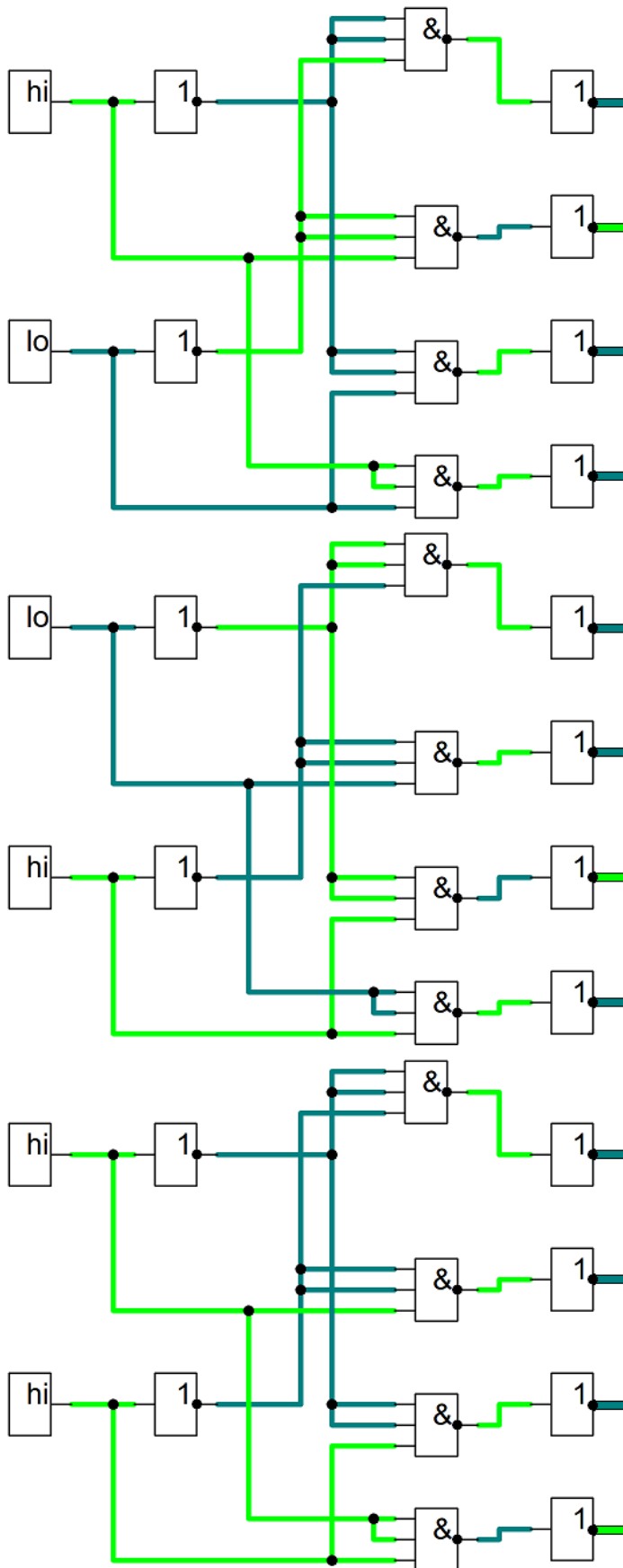


D/A prevodník pre údržbárov :)

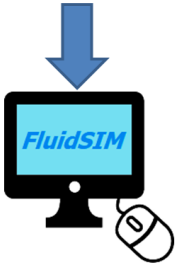


Tlakové ventily sú nastavené na 1, 2 a 3 bary





I ₂	I ₆	Q ₂	Q ₄	Q ₆	Q ₈
0	0	1	0	0	0
0	1	0	1	0	0
1	0	0	0	1	0
1	1	0	0	0	1



[D/A prevodník pre údržárov](#)

[A/D prevodník pre údržárov; Digitálno-analógový prevodník \(D/A prevodník, DAC\), DA prevodník s váhovou rezistorovou sieťou, DA prevodník s priečkovou rezistorovou sieťou \(R-2R rebríková sieť\)](#)