

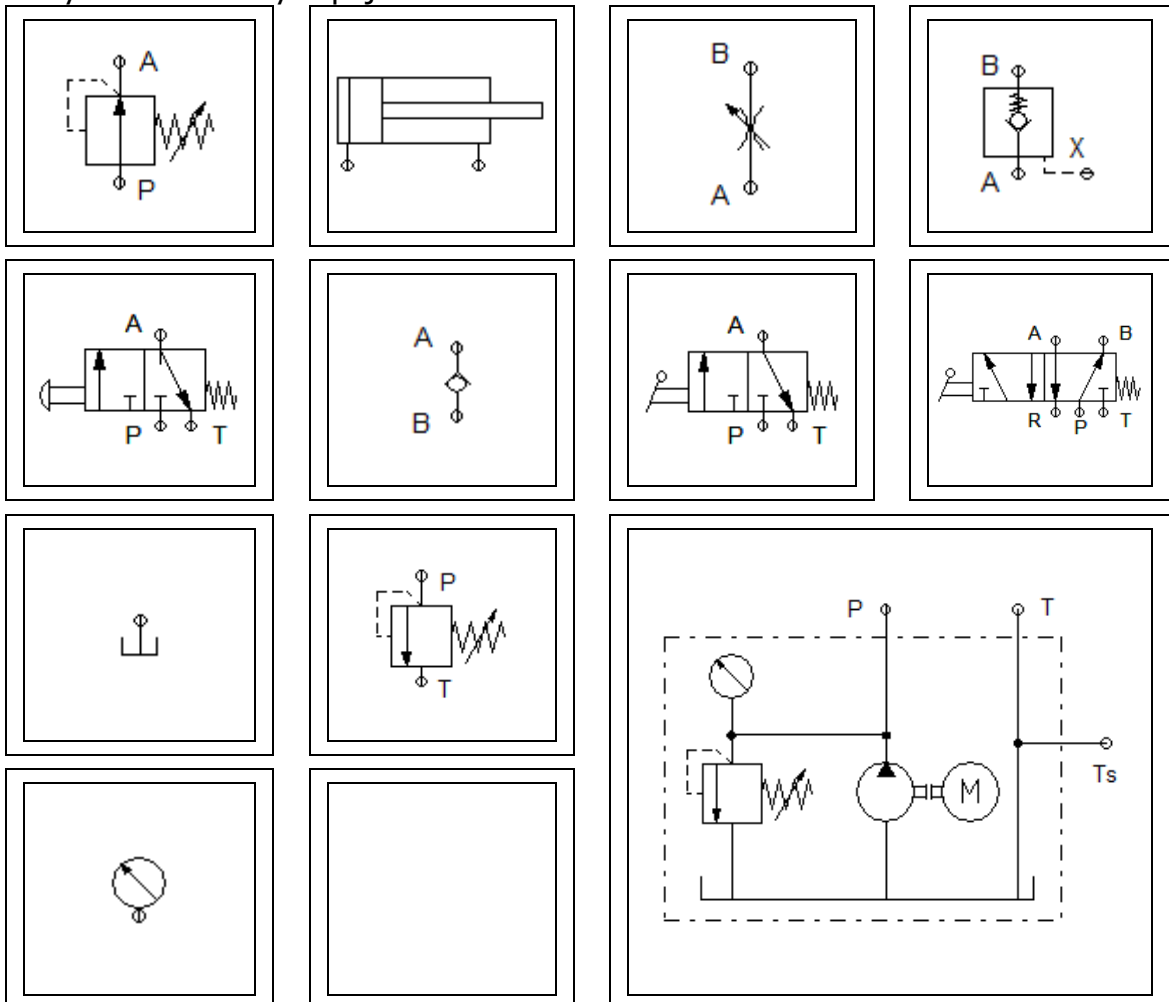
### Príklad 01

Bez použitia 5/3 alebo 4/3 rozvádzačieho ventilu realizujte vysúvanie a zasúvanie piestu dvojčinného valca.

- Zapojenie realizujte tak, aby ste piest mohli zastaviť v ľubovoľnej polohe.
- Spomaľte rýchlosť piesta na minimum.
- Pohyby valca ovládajte tlačidlom.

1. Vyberte súčiastky zapojenia.
2. Rozmiestnite vybrané súčiastky na plochu.
3. Prepojte jednotlivé súčiastky – vytvorte schému.
4. Overtte funkčnosť zapojenia v programe FluidSIM.
5. Overtte funkčnosť zapojenia v praxi.
6. Navrhните praktický spôsob využitia realizovaného zapojenia.

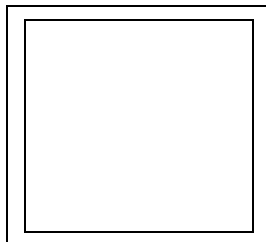
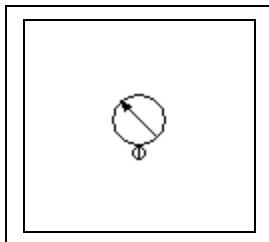
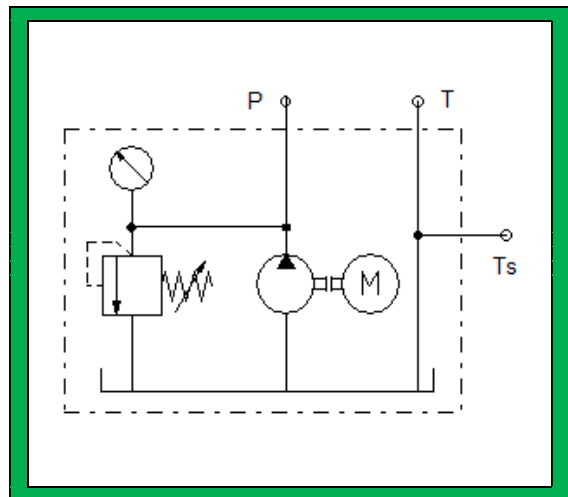
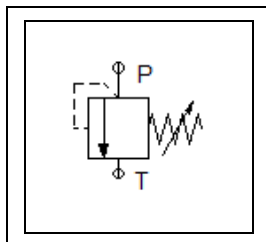
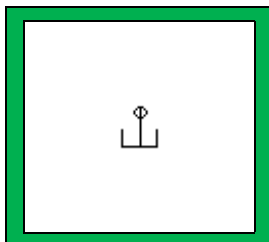
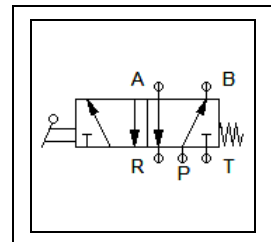
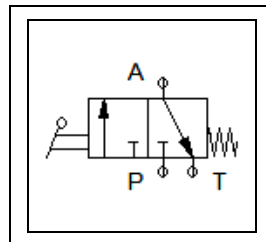
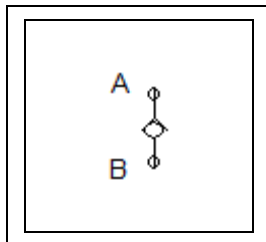
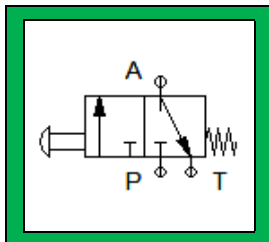
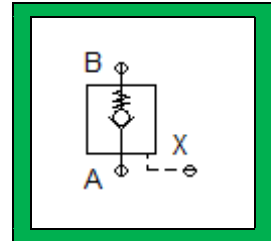
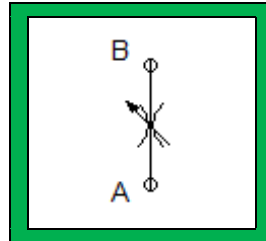
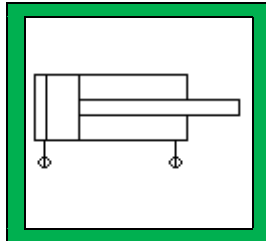
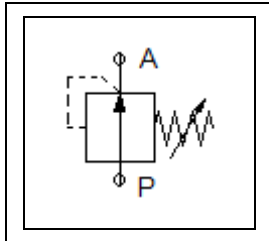
#### 1. Vyberte súčiastky zapojenia.



Príklad 1

1. Vyberte súčiastky zapojenia.

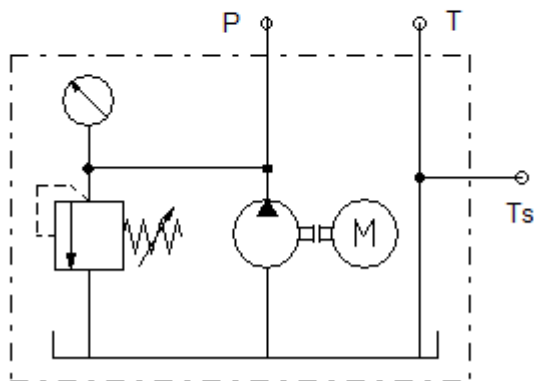
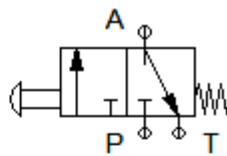
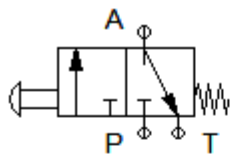
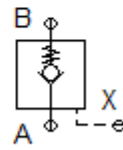
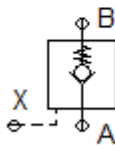
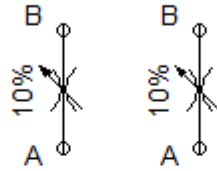
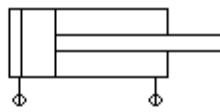
Riešenie



Príklad 1

2. Rozmiestnite vybrané súčiastky na plochu.

Riešenie



3. Prepojte jednotlivé súčiastky – vytvorte schému.  
Riešenie

