

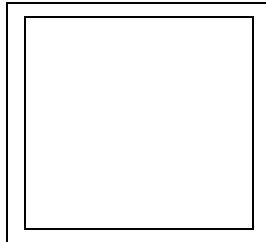
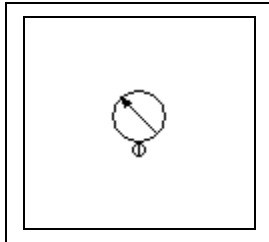
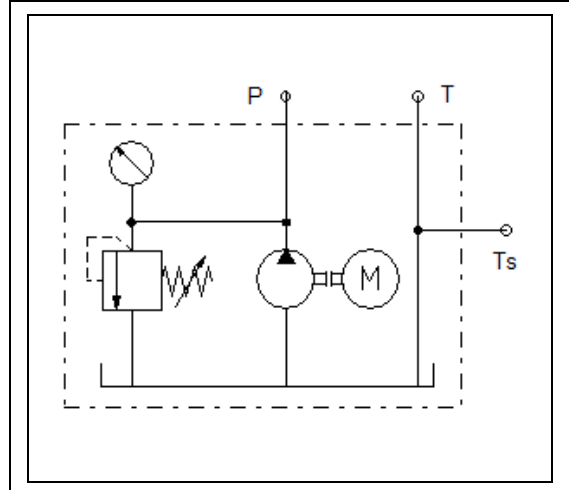
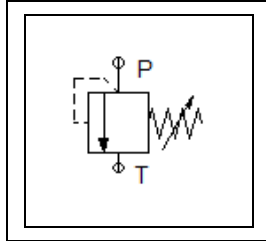
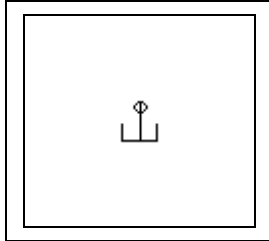
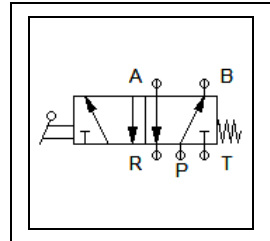
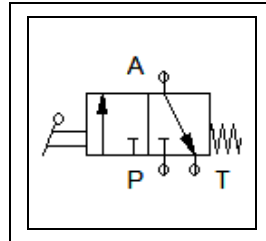
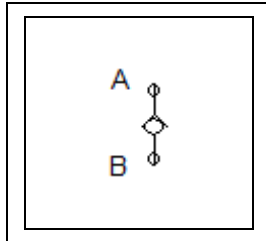
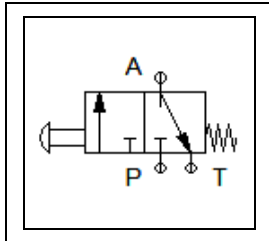
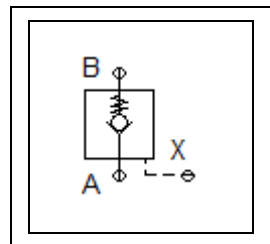
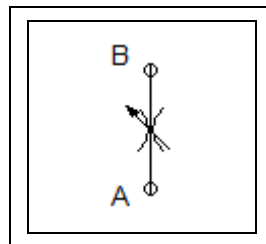
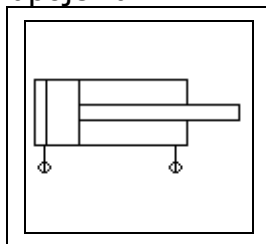
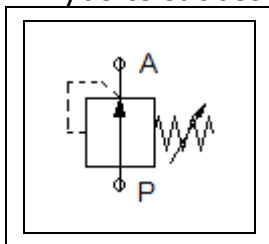
## Príklad 2

Bez použitia 5/3 alebo 4/3 rozvádzačieho ventilu realizujte vysúvanie a zasúvanie piestu dvojčinného valca.

- Zapojenie realizujte tak, aby pri zasúvaní piestnice neprekročil tlak veľkosť 10 barov.
- Pohyby valca ovládajte pákou.

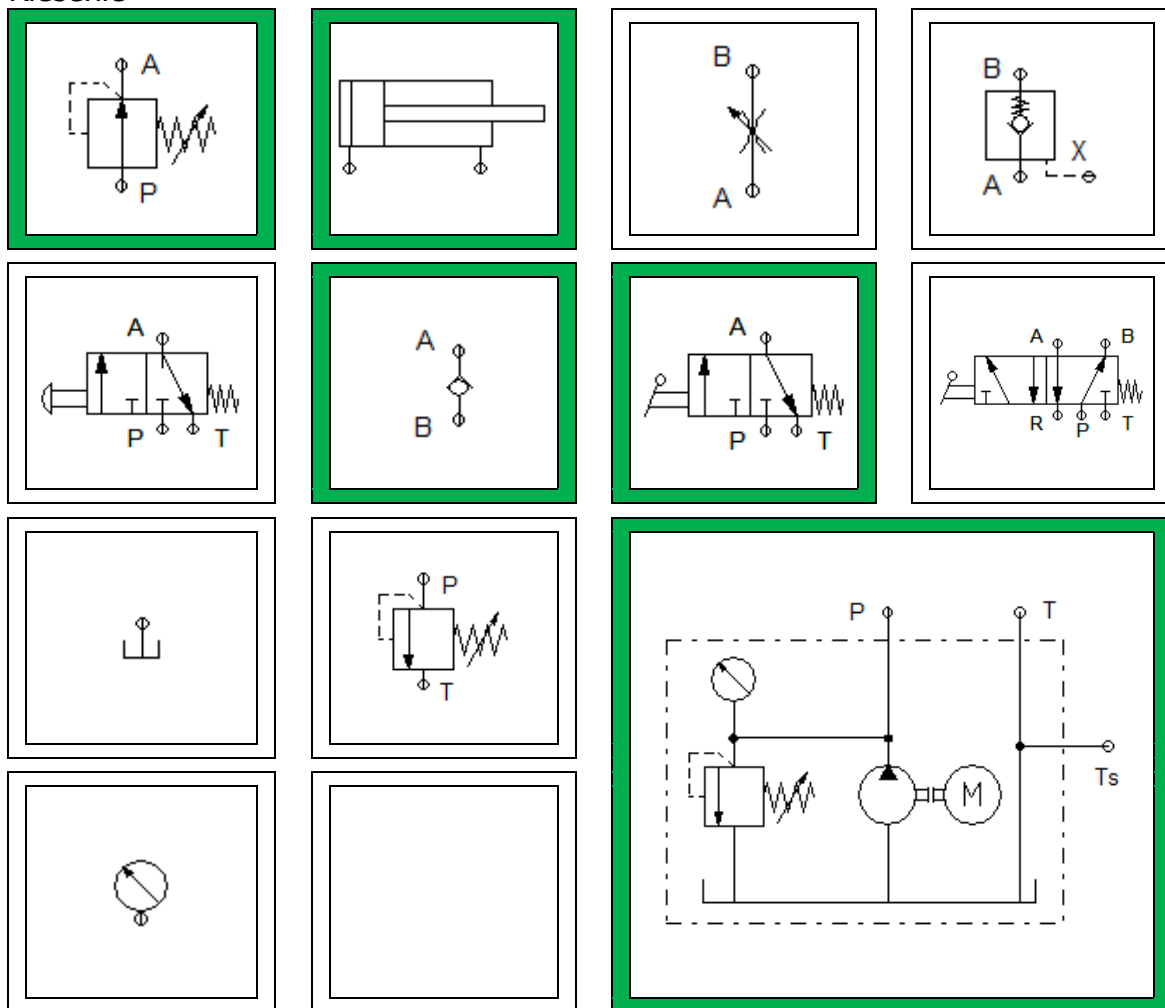
1. Vyberte súčiastky zapojenia.
2. Rozmiestnite vybrané súčiastky na plochu.
3. Prepojte jednotlivé súčiastky – vytvorte schému.
4. Overtte funkčnosť zapojenia v programe FluidSIM.
5. Overtte funkčnosť zapojenia v praxi.
6. Navrhните praktický spôsob využitia realizovaného zapojenia.

### 1. Vyberte súčiastky zapojenia.



1. Vyberte súčiastky zapojenia.

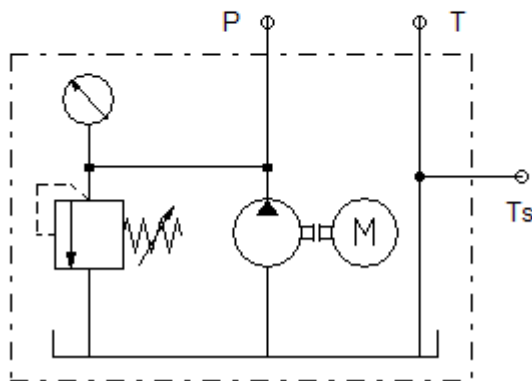
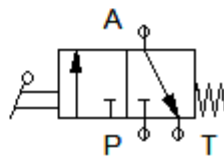
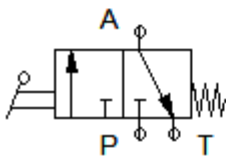
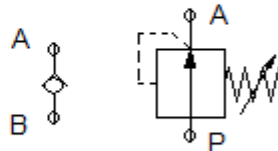
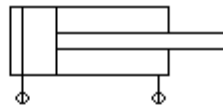
Riešenie



Príklad 2

2. Rozmiestnite vybrané súčiastky na plochu.

Riešenie



3. Prepojte jednotlivé súčiastky – vytvorte schému.  
Riešenie

