

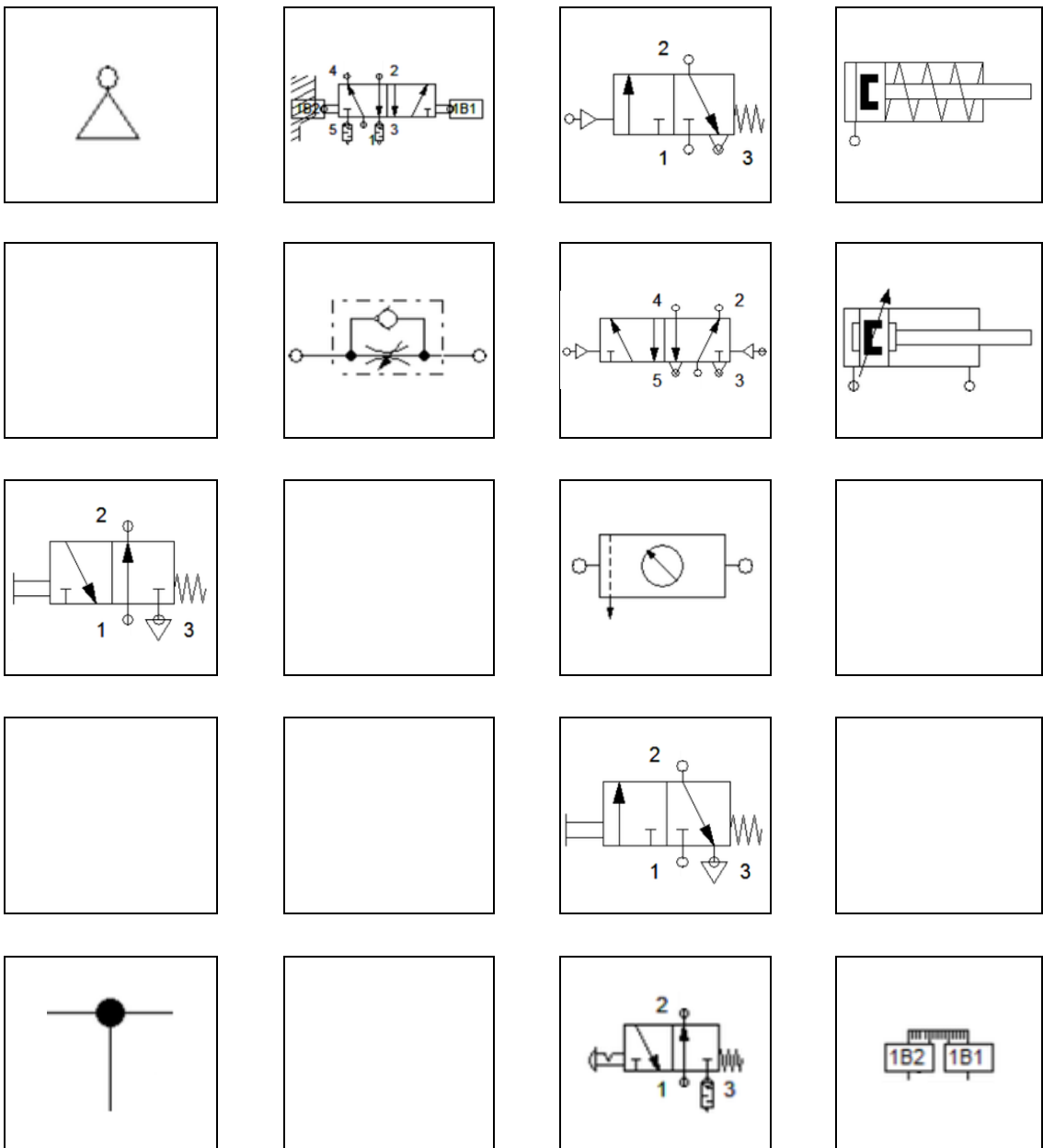
Príklad 02a

Realizujte zapojenie jednočinného valca.

- Vysúvanie valca ovládajte nepriamym riadením.
- Pohyby valca ovládajte tlačidlom.

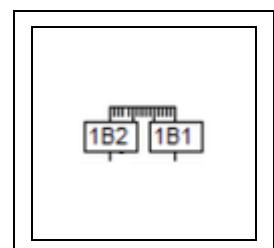
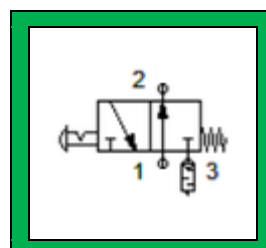
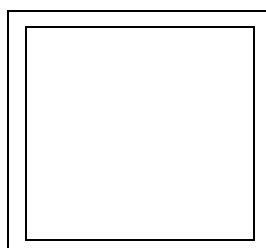
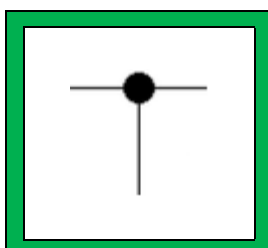
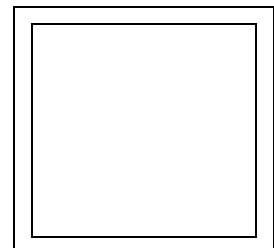
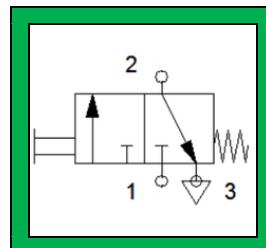
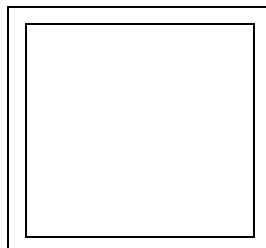
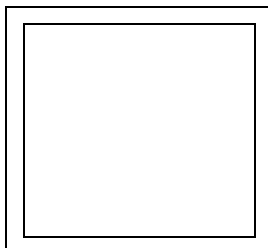
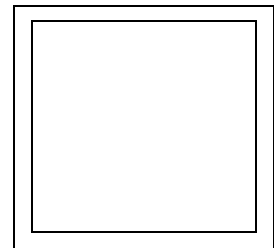
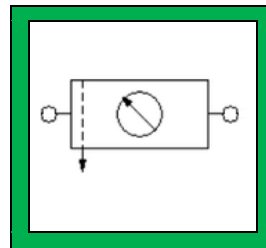
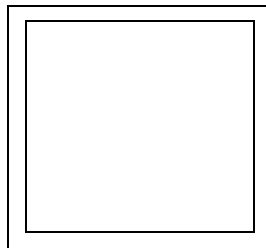
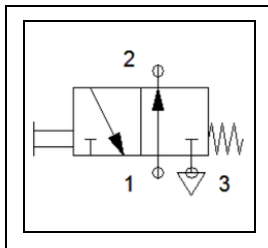
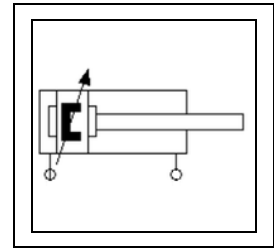
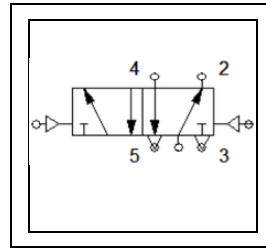
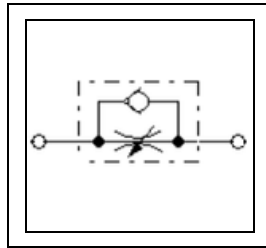
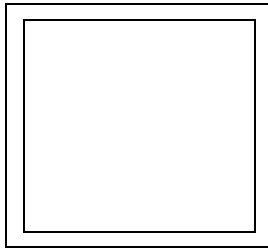
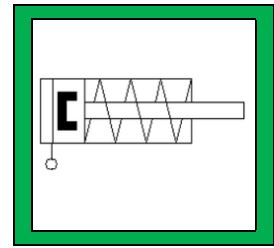
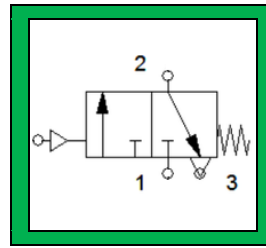
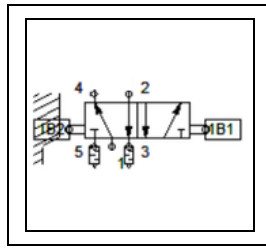
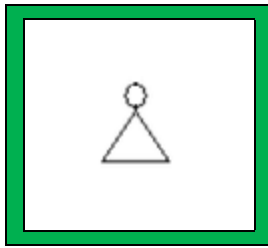
1. Vyberte súčiastky zapojenia.
2. Rozmiestnite vybrané súčiastky na plochu.
3. Prepojte jednotlivé súčiastky – vytvorte schému.
4. Overtte funkčnosť zapojenia v programe FluidSIM.
5. Overtte funkčnosť zapojenia v praxi.
6. Navrhните praktický spôsob využitia realizovaného zapojenia.

1. Vyberte súčiastky zapojenia.

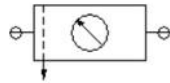
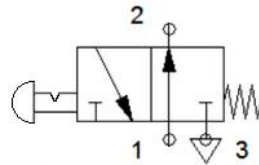
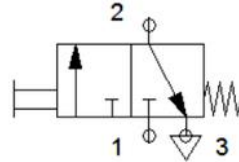
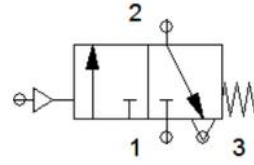
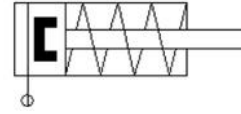


1. Vyberte súčiastky zapojenia.

Riešenie



2. Súčiastky rozmiestnené na ploche vhodne pospájate/Vytvorte schému zapojenia.



2. Súčiastky rozmiestnené na ploche vhodne pospájate/Vytvorte schému zapojenia.
Riešenie

