

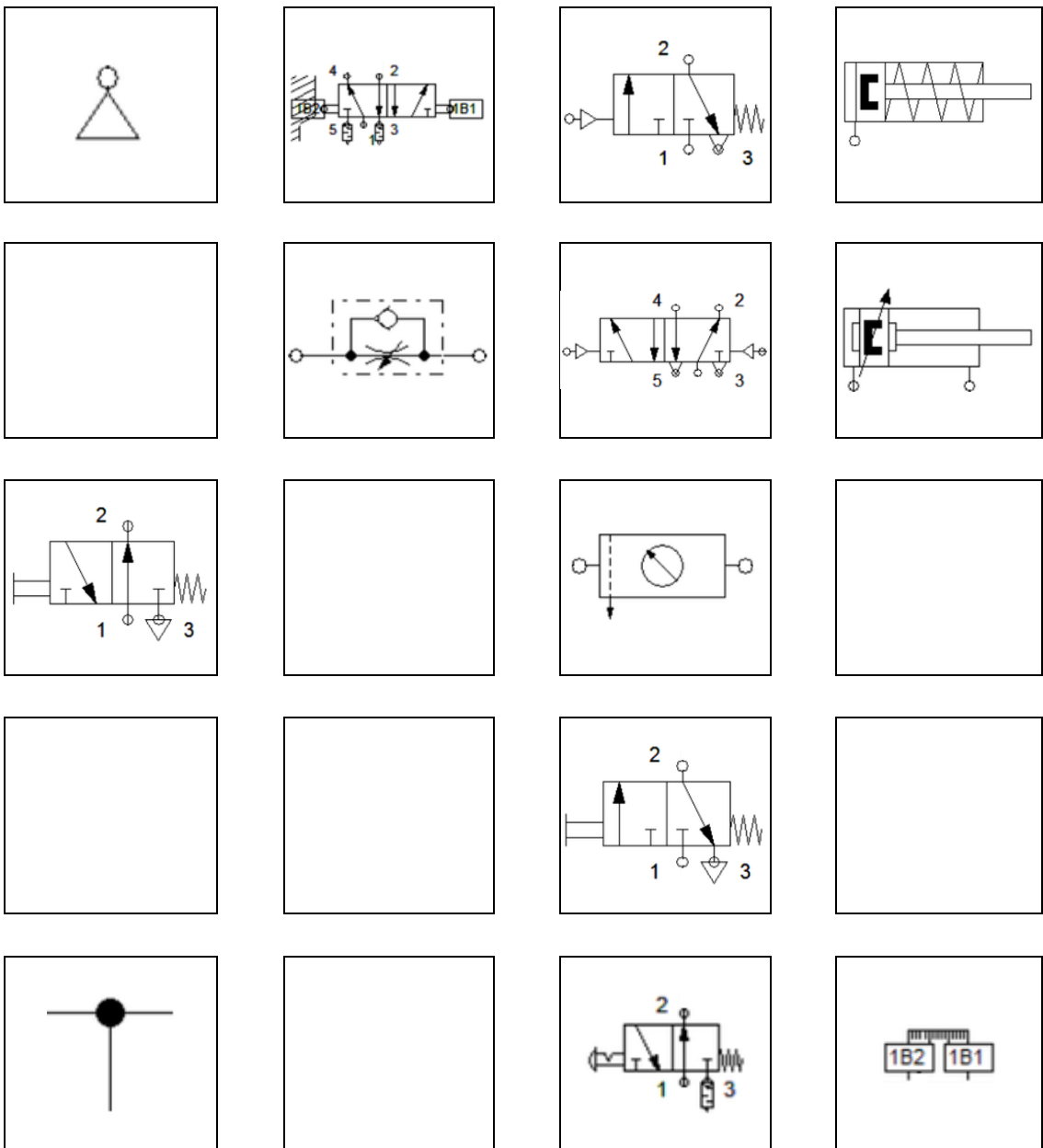
Príklad 04a

Realizujte zapojenie dvojčinného valca.

- Vysúvanie a zasúvanie valca ovládajte v poloautomatickom režime.
- Regulujte rýchlosť vysúvania a zasúvania.

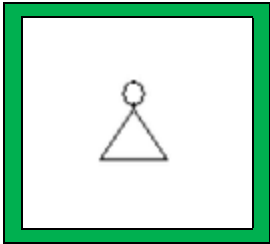
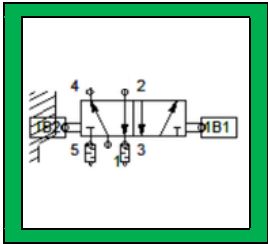
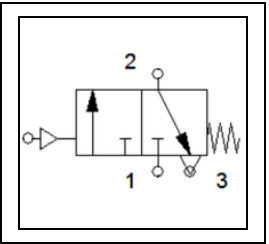
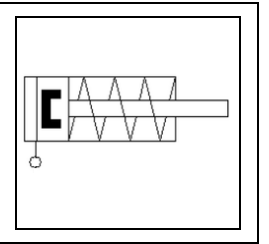
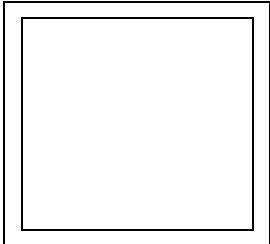
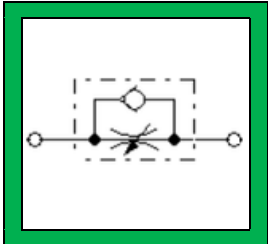
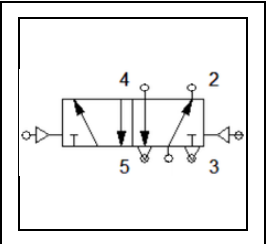
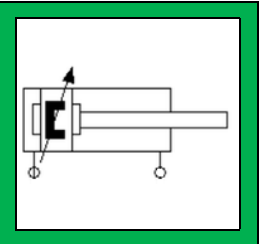
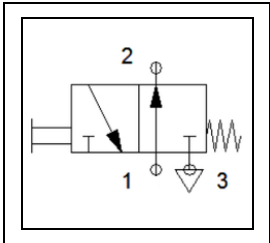
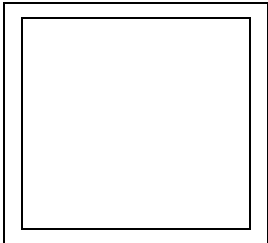
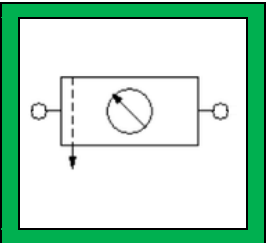
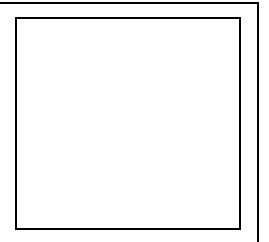
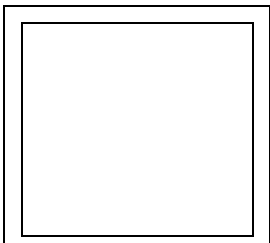
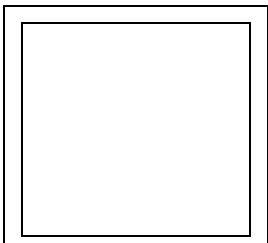
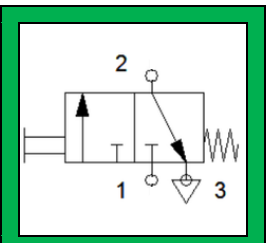
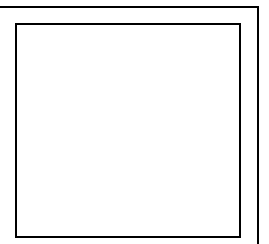
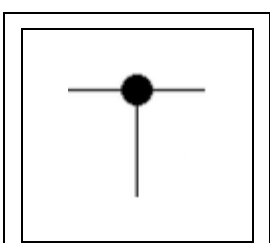
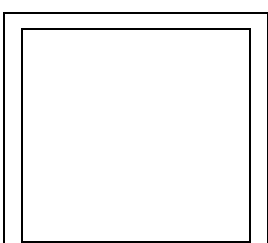
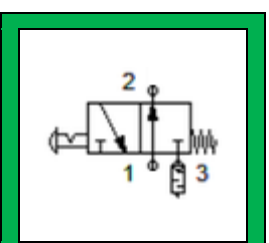
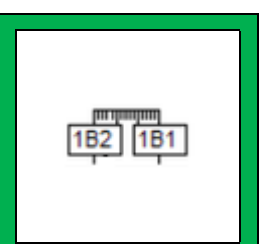
1. Vyberte súčiastky zapojenia.
2. Rozmiestnite vybrané súčiastky na plochu.
3. Prepojte jednotlivé súčiastky – vytvorte schému.
4. Overtte funkčnosť zapojenia v programe FluidSIM.
5. Overtte funkčnosť zapojenia v praxi.
6. Navrhните praktický spôsob využitia realizovaného zapojenia.

1. Vyberte súčiastky zapojenia.

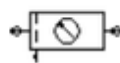
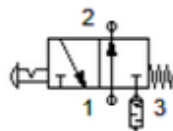
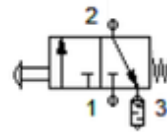
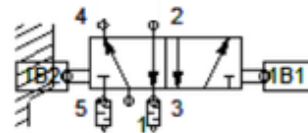
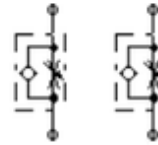
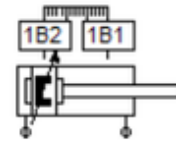


1. Vyberte súčiastky zapojenia.

Riešenie

2. Súčiastky rozmiestnené na ploche vhodne pospájate/Vytvorte schému zapojenia.



2. Súčiastky rozmiestnené na ploche vhodne pospájate/Vytvorte schému zapojenia.
Riešenie

